



AbraxSys
RUGGED LCD SOLUTIONS

OVERVIEW BROCHURE

Rugged Display Solutions Built to Perform in Extreme Environments

Table of Contents

1. About AbraxSys

Cutting-edge technology for industrial computing and monitoring solutions

2. Our Solutions

3. Our Industries

4. Technology, Innovation, & Engineering Expertise

Commitment to precision and performance, meticulously designed to excel in challenging environments and demanding critical applications

- Cutting-edge technology for industrial computing and monitoring solutions
- Touchscreens Tailored for Precision and Durability
- Quality Assurance

5. AbraxSys Products

A diverse range of fully customizable industrial computers and monitors

- Ruggedized Sunlight Readable Monitors
- Harsh Duty Industrial Monitors
- HMI Panel PCs (Standard Luminance & High-Brightness models)
- LCD Integrated Pelican Cases
- LCD Development Kits
- Customization Services

6. Services and Support

- Customer Support

7. Detailed Specs

- Product Variation Charts

A worker in a white hard hat and safety glasses is working on a large, complex industrial control panel. The worker is wearing a dark jacket with yellow accents. The panel is filled with various components, including switches, buttons, and cables. The scene is dimly lit, with a blue and purple color palette, suggesting an industrial or control room environment. The worker is looking up and to the right, focused on the task.

ABRAXSYS ADVANTAGE

DISPLAYS TO MEET EXTREME DEMANDS

AbraxSys is a premier manufacturer of rugged, industrial-grade monitors and display solutions tailored to meet the most stringent demands of various critical industries. AbraxSys has built a reputation for excellence through innovation, quality craftsmanship, and a relentless commitment to customer satisfaction. Our products are designed and manufactured in the USA, ensuring that every solution we deliver meets the highest standards of performance and reliability.

Our Solutions

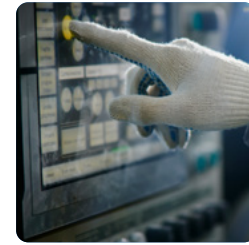
AbraxSys offers a broad range of wide-temperature, high-brightness, sunlight-readable, and IP-rated display solutions engineered to perform under extreme conditions. Our products are utilized in environments where standard commercial displays would fail, ensuring reliable operation in applications such as:



Outdoor installations
where exposure to
direct sunlight and harsh
weather is a factor.



Industrial or military
environments where dust,
vibration, and extreme
temperatures are present.



Mission-critical
operations requiring
consistent performance,
visibility, and durability.

Our Industries

AbraxSys serves a wide array of industries, providing customized solutions that address specific operational challenges:



Oil and Gas

Our rugged displays are designed to withstand the harsh environments of oil rigs and refineries, featuring high-brightness screens for outdoor visibility and wide temperature ranges for extreme climates.



Military

AbraxSys provides military-grade monitors built to meet stringent defense standards, offering rugged construction, secure mounting options, and superior performance in both field and command center environments.



Marine

Our marine displays are fully waterproof, sunlight-readable, and corrosion-resistant, making them ideal for navigation systems and other critical applications on seafaring vessels.



Automotive

We offer durable, vibration-resistant monitors for in-vehicle use, designed to perform reliably in both commercial and military automotive applications.



Aerospace

AbraxSys aerospace displays are engineered for high-altitude performance, with lightweight designs and advanced cooling systems that ensure reliability in the most demanding aviation environments.



Mining

Our mining monitors are built to endure the rough conditions of underground and open-pit mining, featuring reinforced casings and shock-resistant technology.



Energy

AbraxSys provides robust displays for the energy sector, supporting applications in power generation, grid management, and renewable energy systems with reliable performance in volatile environments.



Manufacturing

Our industrial monitors are essential in factory automation, offering precise control and monitoring capabilities with features like touch screen interfaces and wide temperature support.



Transportation

AbraxSys delivers dependable displays for public transit and logistics operations, with products that withstand the rigors of daily use in trains, buses, and fleet vehicles.



Truck Scales

Outdoor rated harsh-duty LCDs for sophisticated scales; durable and reliable HMI systems engineered for wide operational temperatures, direct weather, and 24-hour usage.



First Responders & Border Security

Ruggedized vehicle mountable displays; designed for excessive shock and vibration, using only high-end industrial components, guaranteeing reliable operation in any environment.



Drones & ROVs

Pelican Case mountable monitors tailored to meet the needs of demanding environments, providing crystal-clear images with wide viewing angles, and visibility in direct sunlight.

Technology, Innovation, & Engineering Expertise

At AbraxSys, we pride ourselves on our advanced engineering capabilities. Our team of experts is dedicated to developing high-performance display solutions that set industry standards. Key features of our engineering expertise include:



In-House Design and Manufacturing

We control every aspect of product development, from initial concept through to final assembly, ensuring the highest levels of quality and consistency.



Highly Configurable Solutions

Our products can be customized to meet specific customer requirements, offering flexibility in size, mounting options, brightness levels, and more.



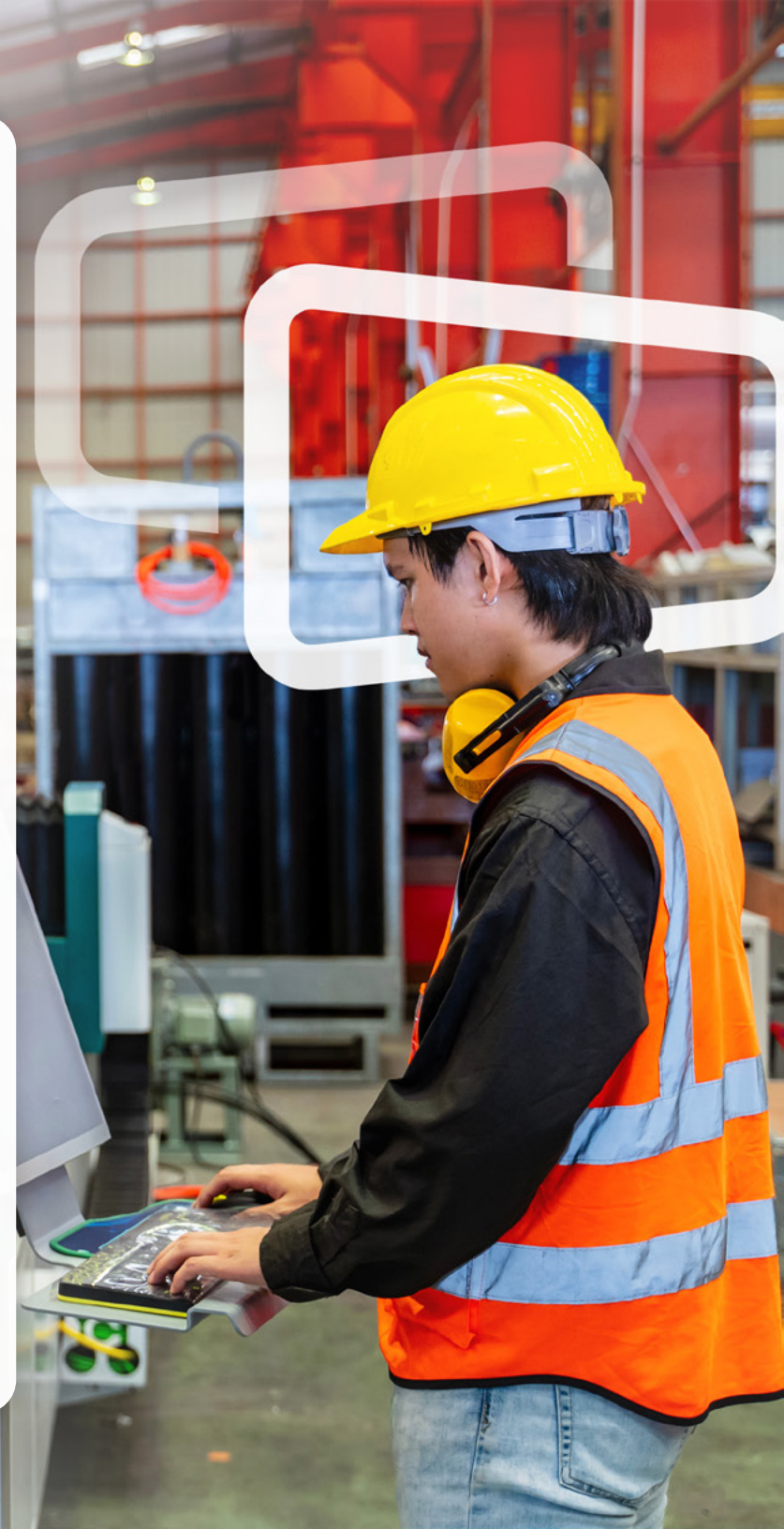
Focus on R&D

We continually invest in research and development, exploring new technologies in high-brightness displays, wide temperature ranges, and innovative touch interfaces.



Made in the USA

All AbraxSys products are proudly designed and manufactured in the United States, reflecting our commitment to quality and American craftsmanship.





Quality Assurance

Quality is at the core of everything we do at AbraxSys. Our commitment to excellence is demonstrated through:



ISO Certifications

AbraxSys is ISO certified, ensuring that our manufacturing processes meet international quality standards.



Rigorous Testing Protocols

Every product undergoes extensive testing, including vibration, thermal, and environmental stress tests, to ensure reliability in the field.



IP Ratings

We offer products with high IP ratings, including IP65 and IP66, which provide protection against dust, water, and other environmental hazards.



Touch Screen Technologies

AbraxSys offers three types of touch screen technologies—Resistive, Hardened Armored Resistive, and Projected Capacitive—each suited to different operational needs.

Touchscreens Tailored for Precision and Durability

AbraxSys offers a diverse range of touchscreen technologies designed to meet the specific needs of various harsh-duty applications. Our monitor offerings are available in multiple variations, many of which are customizable to include the touchscreen technology that best suits your operational requirements. Whether you need the reliability and flexibility of Resistive Touch, the modern functionality of multi-touch capable Projected Capacitive Touch, or the rugged durability of our Hardened Armored Touch, AbraxSys has a solution engineered for your environment.

Feature	Resistive Touch	Projected Capacitive Touch (PCAP)	Hardened Armor Touch
Touch Sensitivity	Pressure-based; works with gloves, fingers and styluses	Touch-based; supports multi-touch with fingers	Touch-based; enhanced with rugged, protective layers
Durability	Highly durable and resistant to dust, moisture, and contaminants	Durable with high clarity, resistant to scratches, but less so than Hardened Armor	Extreme durability; resistant to impacts, scratches, and harsh chemicals
Clarity	Moderate clarity due to multiple layers	High clarity with superior image quality	Moderate clarity due to additional protective layers
Multi-Touch Capability	No (single-touch only)	Yes (supports multi-touch gestures)	Yes & No (size dependent)
Environmental Suitability	Best for harsh environments requiring resistance to contaminants	Ideal for modern, responsive interfaces even in demanding environments	Designed for extreme industrial or military environments
Typical Applications	Industrial controls, ATMs, and environments where gloves could be worn	Public kiosks, control rooms, applications needing sleek user interfaces	Military operations, mining, environments with high risk of physical damage



AbraxSys Products

AbraxSys provides an extensive portfolio of industrial-grade display solutions, including high-brightness sunlight-readable monitors, ultra-rugged harsh-duty monitors, versatile all-in-one Panel PCs, and durable LCD integrated Pelican Cases designed to protect delicate equipment. Our products are meticulously engineered to withstand extreme temperatures, harsh environmental conditions, and rigorous industrial use, making them ideal for critical applications in sectors such as oil and gas, military, marine, aerospace, mining, truck scales, border security, manufacturing, and many others. Whether you need a display solution for outdoor environments, mission-critical operations, or specialized equipment protection, AbraxSys delivers reliable performance where standard commercial displays would fail.

Sunlight Readable Monitors

These high-brightness displays are perfect for outdoor use, ensuring visibility even in direct sunlight. They are designed for applications such as digital signage, kiosks, and outdoor industrial controls.



8.4" to 27" Size Options



VGA up to 1080P or 4K



Touchscreen Available



**Traditional 4:3/5:4 or
16:9/16:10 Wide Formats**



Rated IP65/IP66



Configurations Include:

- Panel Mount LCDs
- Open-Frame LCDs
- VESA Mount LCDs
- Rack Mounts
- Tabletop LCDs
- Kits

LCD Kits

These Sunlight Readable LCD kits are designed to be used in outdoor environments. With our proprietary LED upgrade kit installed, they are very bright that the contents on display are visible under strong sunlight. Also, the components, including the LCDs themselves, are all very wide operational temperature capable. We bundle our LCD kits with enhanced LCDs, an input source board, power supplies, protective impact windows OR touch screen technologies, plus all associated cabling (custom configurations available).



6.4" to 27" Size Options



VGA up to 1080P or 4K



**DVI, HDMI , DisplayPort, VGA,
Composite, SDI, or a combination**



Touchscreen Available



**Traditional 4:3/5:4
or 16:9/16:10 Wide Formats**

Heavy Industrial Monitors

Built for the harshest industrial environments, these monitors feature rugged enclosures, wide temperature ranges, and resistance to dust and moisture. Applications include factories, in-field industrial operations like mining vehicles or off-shore drilling, military, and more.



8.4" to 27" Size Options



VGA up to 1080P or 4K



Touchscreen Available



Traditional 4:3/5:4 or
16:9/16:10 Wide Formats



Rated IP65/IP66



Configurations Include:

- Panel Mount LCDs
- Rack Mounts
- VESA Mount LCDs
- Rugged Benchtop

Panel PCs (Standard & High-Bright)

Our all-in-one Panel PCs combine computing power with high-quality displays, available in standard and high-bright, sunlight readable configurations. These are ideal for first responders, military vehicles, and industrial automation.



15" to 19" Size Options



XGA up to 1080P



Touchscreen Available



Traditional 4:3/5:4
or 16:9 Wide Format



Rated IP65/IP66



Configurations Include:

- Sunlight Readable Computers
- Panel Mount Computers/
Standard-bright PCs

Pelican & Protective Cases

AbraxSys offers rugged, Pelican Cases integrated with Sunlight Readable LCDs into the internal lids of the cases. The result is a usable case to control remote drones and/or ROV submersibles. These cases are waterproof, shockproof, and built to withstand the toughest conditions.



18.5", 21.5", and
DUAL 24" Size Options



Rated IP65+



Customization Services

We offer tailored solutions for unique operational requirements, including custom enclosures, specialized mounting options, and bespoke interface configurations.

Services and Support

AbraxSys is committed to providing exceptional customer service, ensuring that our clients receive the support they need to keep their operations running smoothly.

Our customer support services include:



Dedicated Support Team

Our experienced support team is available to assist with any technical issues, from installation to troubleshooting and beyond.



Warranty Information

Most AbraxSys products come with a comprehensive 3-year warranty, covering defects in materials and workmanship.



Technical Assistance

We offer ongoing technical support to ensure that our products continue to perform at their best, providing guidance on maintenance, upgrades, and more.

DETAILED SPECIFICATIONS





DETAILED SPECS

Heavy Industrial Monitors

Experience the ultimate in durability and performance with our custom industrial monitors, built to withstand tough conditions and harsh environments. These monitors feature robust construction, high-quality components, and rigorous testing to ensure optimal performance in a variety of industries, including manufacturing, automation, and transportation.

Panel Mount LCDs

Model	PM-084	PM-104	PM-121	PM-150	PM-156
Display Size	8.4"	10.4"	12.1"	15.0"	15.6"
Brightness	500 nits (cd/m2)	400 nits (cd/m2)	500 nits (cd/m2)	500 nits (cd/m2)	400 nits (cd/m2)
Resolution	800 x 600 (SVGA) Native	1024 x 768 (XGA) Native	1024 x 768 (XGA) Native	1024 x 768 (XGA) Native	1920 x 1080 (1080p)
Inputs	VGA, DVI, DisplayPort, HDMI	VGA, DVI, DisplayPort, HDMI	VGA, DVI, DisplayPort, HDMI	VGA, DVI, DisplayPort, HDMI, SDI, Composite	VGA, DVI, DisplayPort, HDMI, SDI, Composite
Operating Temperature Range	-30°C to 70°C (-22°F to 158°F)	-30°C to 80°C (-22°F to 176°F)	-30°C to 85°C (-22°F to 185°F)	-30°C to 70°C (-22°F to 158°F)	-20°C to 75°C (-4°F to 167°F)
Rating	NEMA 4 / IP65	NEMA 4 / IP65	NEMA 4 / IP65	NEMA 4 / IP65	NEMA 4 / IP65

Model	PM-170	PM-185	PM-190	PM-201	PM-215
Display Size	17.0"	18.5"	19.0"	20.1"	21.5"
Brightness	350 nits (cd/m2)	500 nits (cd/m2)	450 nits (cd/m2)	330 nits (cd/m2)	300 nits (cd/m2)
Resolution	1280 x 1024 (SXGA) Native	1920 x 1080 (1080p) – True High-Definition	1280 x 1024 (SXGA) Native	1600 x 1200 (UXGA)	1920 x 1080 (1080p) – True High-Definition
Inputs	VGA, DVI, DisplayPort, HDMI, SDI, Composite	VGA, DVI, DisplayPort, HDMI, SDI, Composite	VGA, DVI, DisplayPort, HDMI, SDI, Composite	VGA, DVI, DisplayPort, HDMI, SDI, Composite	VGA, DVI, DisplayPort, HDMI, SDI, Composite
Operating Temperature Range	-30°C to 70°C (-22°F to 158°F)	-20°C to 70°C (-4°F to 158°F)	-30°C to 85°C (-22°F to 185°F)	-10°C to 55°C (14°F to 131°F)	-20°C to 70°C (-4°F to 158°F)
Rating	NEMA 4 / IP65	NEMA 4 / IP65	NEMA 4 / IP65	NEMA 4 / IP65	NEMA 4 / IP65

Panel Mount LCDs

Model	PM-240
Display Size	24.0"
Brightness	300 nits (cd/m2) 500 nits (cd/m2)
Resolution	1920 x 1080 (1080p) – True High-Definition 1920 x 1200 (WUXGA)
Inputs	VGA, DVI, DisplayPort, HDMI, SDI, Composite
Operating Temperature Range	-20°C to 70°C (-4°F to 158°F)
Rating	NEMA 4 / IP65

Panel Mount Stainless Bezel LCDs

Model	PS-084	PS-121	PS-150	PS-156	PS-170
Display Size	8.4"	12.1"	15.0"	15.6"	17.0"
Brightness	500 nits (cd/m2)	500 nits (cd/m2)	500 nits (cd/m2)	400 nits (cd/m2)	350 nits (cd/m2)
Resolution	800 x 600	1024 x 768 (XGA) Native	1024 x 768 (XGA) Native	1920 x 1080 (1080p)	1280 x 1024 (SXGA) Native
Inputs	VGA, DVI, DisplayPort, HDMI	VGA, DVI, DisplayPort, HDMI	VGA, DVI, DisplayPort, HDMI, SDI, Composite	VGA, DVI, DisplayPort, HDMI, SDI, Composite	VGA, DVI, DisplayPort, HDMI, SDI, Composite
Operating Temperature Range	-30°C to 70°C (-22°F to 158°F)	-30°C to 85°C (-22°F to 185°F)	-10°C to 50°C (14°F to 122°F)	-20°C to 75°C (-4°F to 167°F)	-30°C to 70°C (-22°F to 158°F)
Rating	NEMA 4X / IP66	NEMA 4X / IP66	NEMA 4X / IP66	NEMA 4X / IP66	NEMA 4X / IP66

Model	PS-185	PS-190
Display Size	18.5"	19.0"
Brightness	500 nits (cd/m2)	450 nits (cd/m2)
Resolution	1920 x 1080 (1080p)	1280 x 1024 (SXGA) Native
Inputs	VGA, DVI, DisplayPort, HDMI, SDI, Composite	VGA, DVI, DisplayPort, HDMI, SDI, Composite
Operating Temperature Range	-20°C to +70°C (158°F)	-30°C to 85°C (-22°F to 185°F)
Rating	NEMA 4X / IP66	NEMA 4X / IP66

VESA Mount LCDs

Model	VM-084	VM-121	VM-133-ULP	VM-150	VM-170
Display Size	8.4"	12.1"	13.3"	15.0"	17.0"
Brightness	500 nits (cd/m2)	500 nits (cd/m2)	400 nits (cd/m2)	500 nits (cd/m2)	350 nits (cd/m2)
Resolution	1024 x 768 (XGA) Native	1024 x 768 (XGA) Native	1920 x 1080 (1080p)	1024 x 768 (XGA) Native	1280 x 1024 (SXGA) Native
Inputs	VGA, DVI, DisplayPort, HDMI	VGA, DVI, DisplayPort, HDMI	VGA, DVI, DisplayPort, HDMI	VGA, DVI, DisplayPort, HDMI, SDI, Composite	VGA, DVI, DisplayPort, HDMI, SDI, Composite
Operating Temperature Range	-30°C to 70°C (-22°F to 158°F)	-30°C to 85°C (-22°F to 185°F)	-30°C to 70°C (-22°F to 158°F)	-40°C to 85°C (-40°F to 185°F)	-30°C to 80°C (-22°F to 176°F)
Rating	NEMA 12 / IP52	NEMA 12 / IP52	NEMA 12 / IP52	NEMA 12 / IP52	NEMA 12 / IP52

Model	VM-185	VM-190	VM-201	VM-215	VM-240
Display Size	18.5"	19.0"	20.1"	21.5"	24.0"
Brightness	500 nits (cd/m2)	450 nits (cd/m2)	330 nits (cd/m2)	400 nits (cd/m2)	300-500 nits (cd/m2)
Resolution	1920 x 1080 (1080p)	1280 x 1024 (SXGA) Native	1600 x 1200 (UXGA)	1920 x 1080 (1080p)	1920 x 1080 (1080p) – True High-Definition 1920 x 1200 (WUXGA)
Inputs	VGA, DVI, DisplayPort, HDMI, SDI, Composite	VGA, DVI, DisplayPort, HDMI, SDI, Composite	VGA, DVI, DisplayPort, HDMI, SDI, Composite	VGA, DVI, DisplayPort, HDMI, SDI, Composite	VGA, DVI, DisplayPort, HDMI, SDI, Composite
Operating Temperature Range	-30°C to 80°C (-22°F to 176°F)	-30°C to 80°C (-22°F to 176°F)	-10°C to 55°C (14°F to 131°F)	-20°C to 70°C (-4°F to 158°F)	-30°C to 80°C (-22°F to 176°F)
Rating	NEMA 12 / IP52	NEMA 12 / IP52	NEMA 12 / IP52	NEMA 12 / IP52	NEMA 12 / IP52

Fully-Sealed VESA Mount LCDs

Model	FVM-133	FVM-150	FVM-156	FVM-185	FVM-190
Display Size	13.3"	15.0"	15.6"	18.5"	19.0"
Brightness	400 nits (cd/m2)	500 nits (cd/m2)	400 nits (cd/m2)	500 nits (cd/m2)	450 nits (cd/m2)
Resolution	1920 x 1080 (1080p)	1024 x 768 (XGA) Native	1920 x 1080 (1080p)	1920 x 1080 (1080p)	1280 x 1024 (SXGA) Native
Inputs	VGA, DVI, DisplayPort, HDMI, SDI, Composite	VGA, DVI, DisplayPort, HDMI, SDI, Composite	VGA, DVI, DisplayPort, HDMI, SDI, Composite	VGA, DVI, DisplayPort, HDMI, SDI, Composite	VGA, DVI, DisplayPort, HDMI, SDI, Composite
Operating Temperature Range	-30°C to 70°C (-22°F to 158°F)	-30°C to 70°C (-22°F to 158°F)	-20°C to 75°C (-4°F to 167°F)	-30°C to 70°C (-22°F to 158°F)	-30°C to 70°C (-22°F to 158°F)
Rating	NEMA 4 / IP65	NEMA 4 / IP65	NEMA 4 / IP65	NEMA 4 / IP65	NEMA 4 / IP65

Tabletop LCDs

Model	T-150	T-170	T-185	T-190	T-215
Display Size	15.0"	17.0"	18.5"	19.0"	21.5"
Brightness	500 nits (cd/m2)	350 nits (cd/m2)	500 nits (cd/m2)	300 nits (cd/m2) 500 nits (cd/m2)	400 nits (cd/m2)
Resolution	1024 x 768	1280 x 1024 (SXGA) Native	1920 x 1080 (1080p)	1280 x 1024 (SXGA) Native	1920 x 1080 (1080p) – True High-Definition
Inputs	VGA, DVI, DisplayPort, HDMI, SDI, Compsite	VGA, DVI, DisplayPort, HDMI, SDI, Compsite	VGA, DVI, DisplayPort, HDMI, SDI, Compsite	VGA, DVI, DisplayPort, HDMI, SDI, Compsite	VGA, DVI, DisplayPort, HDMI, SDI, Compsite
Operating Temperature Range	-30°C to 70°C (-22°F to 158°F)	-30°C to 70°C (-22°F to 158°F)	-20°C to 70°C (-4°F to 158°F)	-25°C to 55°C (-13°F to 131°F)	-10°C to 50°C (14°F to 122°F) Extended Operational Temperature Ranges Available
Rating	NEMA 12 / IP52	NEMA 12 / IP52	NEMA 12 / IP52	NEMA 12 / IP52	NEMA 12 / IP52

Model	T-240
Display Size	24.0"
Brightness	300 nits (cd/m2) 500 nits (cd/m2)
Resolution	1920 x 1080 (1080p)
Inputs	VGA, DVI, DisplayPort, HDMI, SDI, Composite
Operating Temperature Range	-20°C to 70°C (-4°F to 158°F)
Rating	NEMA 12 / IP52

Rack Mount LCDs

Model	RM-150	RM-190
Display Size	15.0"	19.0"
Brightness	500 nits (cd/m2)	450 nits (cd/m2)
Resolution	1024 x 768 (XGA) Native	1280 x 1024 (SXGA) Native
Inputs	4VGA, DVI, DisplayPort, HDMI, SDI, Composite	VGA, DVI, DisplayPort, HDMI, SDI, Composite
Operating Temperature Range	-30°C to 70°C (-22°F to 158°F)	-30°C to 85°C (-22°F to 185°F)
Rating	Rack Mountable	Rack Mountable



DETAILED SPECS

Sunlight Readable/ Outdoor Monitors

Designed for exceptional visibility and performance in direct sunlight or bright ambient light, our sunlight-readable monitors and outdoor displays offer superior image quality and vibrant colors. Engineered to endure harsh weather conditions, these monitors are perfect for outdoor kiosks, digital signage, and other demanding applications.

Sunlight Readable Panel Mount LCDs

Model	SRD-PM-084	SRD-PM-104	SRD-PM-121	SRD-PM-150	SRD-PM-156
Display Size	8.4"	10.4"	12.1"	15.0"	15.6"
Brightness	1200 nits (cd/m2)	1300 nits (cd/m2)	1200 nits (cd/m2)	1600 nits (cd/m2)	1500 nits (cd/m2)
Resolution	800 x 600	1024 x 768 (XGA) Native	1024 x 768 (XGA) Native	1024 x 768 (XGA) Native	1920 x 1080 (1080p)
Inputs	VGA, DVI, DisplayPort, HDMI	VGA, DVI, DisplayPort, HDMI	VGA, DVI, DisplayPort, HDMI	VGA, DVI, DisplayPort, HDMI, SDI, Composite	VGA, DVI, DisplayPort, HDMI, SDI, Composite
Operating Temperature Range	-30°C to 80°C (-22°F to 176°F)	-30°C to 85°C (-22°F to 185°F)	-30°C to 85°C (-22°F to 185°F)	-30°C to 80°C (-22°F to 176°F)	-30°C to 75°C (-22°F to 167°F)
Rating	NEMA 4 / IP65	NEMA 4 / IP65	NEMA 4 / IP65	NEMA 4 / IP65	NEMA 4 / IP65

Model	SRD-PM-170	SRD-PM-185	SRD-PM-190	SRD-PM-215	SRD-PM-240
Display Size	17.0"	18.5"	19.0"	21.5"	24.0"
Brightness	1200 nits (cd/m2)	1500 nits (cd/m2)	1600 nits (cd/m2)	1200 nits (cd/m2)	1400 nits (cd/m2)
Resolution	1280 x 1024 (SXGA) Native	1920 x 1080 (1080p)	1280 x 1024 (SXGA) Native	1920 x 1080 (1080p)	1920 x 1080 (1080p) 1920 x 1200 (WUXGA)
Inputs	VGA, DVI, DisplayPort, HDMI, SDI, Composite	VGA, DVI, DisplayPort, HDMI, SDI, Composite	VGA, DVI, DisplayPort, HDMI, SDI, Composite	VGA, DVI, DisplayPort, HDMI, SDI, Composite	VGA, DVI, DisplayPort, HDMI, SDI, Composite
Operating Temperature Range	-30°C to 70°C (-22°F to 158°F)	-20°C to 70°C (-4°F to 158°F)	-30°C to 85°C (-22°F to 185°F)	-20°C to 70°C (-4°F to 158°F)	-20°C to 70°C (-4°F to 158°F)
Rating	NEMA 4 / IP65	NEMA 4 / IP65	NEMA 4 / IP65	NEMA 4 / IP65	NEMA 4 / IP65

Sunlight Readable Panel Mount Stainless Bezel LCDs

Model	SRD-PS-084	SRD-PS-121	SRD-PS-150	SRD-PS-156	SRD-PS-170
Display Size	8.4"	12.1"	15.0"	15.6"	17.0"
Brightness	1200 nits (cd/m2)	1200 nits (cd/m2)	1600 nits (cd/m2)	1500 nits (cd/m2)	1200 nits (cd/m2)
Resolution	800 x 600	1024 x 768 (XGA) Native	1024 x 768 (XGA) Native	1920 x 1080 (1080p)	1280 x 1024 (SXGA) Native
Inputs	VGA, DVI, DisplayPort, HDMI	VGA, DVI, DisplayPort, HDMI	VGA, DVI, DisplayPort, HDMI, SDI, Composite	VGA, DVI, DisplayPort, HDMI, SDI, Composite	VGA, DVI, DisplayPort, HDMI, SDI, Composite
Operating Temperature Range	-30°C to 80°C (-22°F to 176°F)	-30°C to 80°C (-22°F to 176°F)	-30°C to 80°C (-22°F to 176°F)	-30°C to 75°C (-22°F to 167°F)	-30°C to 70°C (-22°F to 158°F)
Rating	NEMA 4X / IP66	NEMA 4X / IP66	NEMA 4X / IP66	NEMA 4X / IP66	NEMA 4X / IP66

Model	SRD-PS-185	SRD-PS-190
Display Size	18.5"	19.0"
Brightness	1500 nits (cd/m2)	1600 nits (cd/m2)
Resolution	1920 x 1080 (1080p)	1280 x 1024 (SXGA) Native
Inputs	VGA, DVI, DisplayPort, HDMI, SDI, Composite	VGA, DVI, DisplayPort, HDMI, SDI, Composite
Operating Temperature Range	-20°C to 70°C (-4°F to 158°F)	-30°C to 85°C (-22°F to 185°F)
Rating	NEMA 4X / IP66	NEMA 4X / IP66

Sunlight Readable VESA Mount LCDs

Model	SRD-VM-084	SRD-VM-104	SRD-VM-121	SRD-VM-133-ULP	SRD-VM-150
Display Size	8.4"	10.4"	12.1"	13.3"	15.0"
Brightness	1200 nits (cd/m2)	1300 nits (cd/m2)	1200 nits (cd/m2)	1500 nits (cd/m2)	1600 nits (cd/m2)
Resolution	800 x 600	1024 x 768	1024 x 768	1920 x 1080 (1080p)	1024 x 768
Inputs	VGA, DVI, DisplayPort, HDMI	VGA, DVI, DisplayPort, HDMI	VGA, DVI, DisplayPort, HDMI	VGA, DVI, DisplayPort, HDMI, SDI, Composite	VGA, DVI, DisplayPort, HDMI, SDI, Composite
Operating Temperature Range	-30°C to 80°C (-22°F to 176°F)	-30°C to 85°C (-22°F to 185°F)	-30°C to 85°C (-22°F to 185°F)	-30°C to 70°C (-22°F to 158°F)	-30°C to 80°C (-22°F to 176°F)
Rating	NEMA 12 / IP50	NEMA 12 / IP50	NEMA 12 / IP50	NEMA 12 / IP50	NEMA 12 / IP50

Model	SRD-VMLP-150	SRD-VM-170	SRD-VM-185	SRD-VM-190	SRD-VM-215
Display Size	15.0"	17.0"	18.5"	19.0"	21.5"
Brightness	1600 nits (cd/m2)	1200 nits (cd/m2)	1500 nits (cd/m2)	1600 nits (cd/m2)	1200 nits (cd/m2)
Resolution	1024 x 768 (XGA) Native	1280 x 1024 (SXGA) Native	1920 x 1080 (1080p)	1280 x 1024 (SXGA) Native	1920 x 1080 (1080p)
Inputs	VGA, DisplayPort, HDMI	VGA, DVI, DisplayPort, HDMI, SDI, Composite	VGA, DVI, DisplayPort, HDMI, SDI, Composite	VGA, DVI, DisplayPort, HDMI, SDI, Composite	VGA, DVI, DisplayPort, HDMI, SDI, Composite
Operating Temperature Range	-30°C to 80°C (-22°F to 176°F)	-30°C to 70°C (-22°F to 158°F)	-20°C to 70°C (-4°F to 158°F)	-30°C to 85°C (-22°F to 185°F)	-20°C to 70°C (-4°F to 158°F)
Rating	NEMA 12 / IP52	NEMA 12 / IP50	NEMA 12 / IP50	NEMA 12 / IP50	NEMA 12 / IP52

Model	SRD-VM-240	SRD-VM-270
Display Size	24.0"	27.0"
Brightness	1200 nits (cd/m2)	1000 nits (cd/m2)
Resolution	1920 x 1080 (HD 1080P) 1920 x 1200 (WUXGA) panel configuration dependent	1920 x 1080 (FHD 1080P) 3840 x 2160 (UHD 4K) panel configuration dependent
Inputs	VGA, DVI, DisplayPort, HDMI, SDI, Composite	DVI, DisplayPort, HDMI
Operating Temperature Range	-20°C to 70°C (-4°F to 158°F)	-20°C to 60°C (-4°F to 140°F)
Rating	NEMA 12 / IP52	NEMA 12 / IP52

Sunlight Readable, Fully-Sealed VESA Mount LCDs

Model	SRD-FVM-133	SRD-FVM-150	SRD-FVM-156	SRD-FVM-185	SRD-FVM-190
Display Size	13.3"	15.0"	15.6"	18.5"	19.0"
Brightness	1500 nits (cd/m2)	1600 nits (cd/m2)	1500 nits (cd/m2)	1500 nits (cd/m2)	1600 nits (cd/m2)
Resolution	1920 x 1080 (1080p) – True High-Definition	1024 x 768 (XGA) Native	1920 x 1080 (1080p)	1920 x 1080 (1080p)	1280 x 1024 (SXGA) Native
Inputs	DVI, DisplayPort, HDMI, Composite	VGA, DVI, DisplayPort, HDMI, SDI, Composite	VGA, DVI, DisplayPort, HDMI, SDI, Composite	VGA, DVI, DisplayPort, HDMI, SDI, Composite	VGA, DVI, DisplayPort, HDMI, SDI, Composite
Operating Temperature Range	-30°C to 70°C (-22°F to 158°F)	-30°C to 80°C (-22°F to 176°F)	-30°C to 75°C (-22°F to 167°F)	-20°C to 70°C (-4°F to 158°F)	-30°C to 75°C (-22°F to 167°F)
Rating	NEMA 12 / IP52	NEMA 4 / IP65	NEMA 4 / IP65	NEMA 4 / IP65	NEMA 4 / IP65

Sunlight Readable Tabletop LCDs

Model	SRD-T-150	SRD-T-170	SRD-T-185	SRD-T-190	SRD-T-215
Display Size	15.0"	17.0"	18.5"	19.0"	21.5"
Brightness	1600 nits (cd/m2)	1200 nits (cd/m2)	1500 nits (cd/m2)	1600 nits (cd/m2)	1200 nits (cd/m2)
Resolution	1024 x 768	1280 x 1024 (SXGA) Native	1920 x 1080 (1080p)	1280 x 1024 (SXGA) Native	1920 x 1080 (1080p)
Inputs	VGA, DVI, DisplayPort, HDMI, SDI, Composite	VGA, DVI, DisplayPort, HDMI, SDI, Composite	VGA, DVI, DisplayPort, HDMI, SDI, Composite	VGA, DVI, DisplayPort, HDMI, SDI, Composite	VGA, DVI, DisplayPort, HDMI, SDI, Composite
Operating Temperature Range	-30°C to 80°C (-22°F to 176°F)	-30°C to 70°C (-22°F to 158°F)	-20°C to 70°C (-4°F to 158°F)	-30°C to 85°C (-22°F to 185°F)	-20°C to 70°C (-4°F to 158°F)
Rating	NEMA 12 / IP50	NEMA 12 / IP50	NEMA 12 / IP50	NEMA 12 / IP50	NEMA 12 / IP50

Model	SRD-T-240
Display Size	24.0"
Brightness	1400 nits (cd/m2)
Resolution	1920 x 1080 (1080p)
Inputs	VGA, DVI, DisplayPort, HDMI, SDI, Composite
Operating Temperature Range	-20°C to 70°C (-4°F to 158°F)
Rating	NEMA 12 / IP50

Sunlight Readable Rack Mount LCDs

Model	SRD-RM-150	SRD-RM-190
Display Size	15.0"	19.0"
Brightness	1600 nits (cd/m2)	1600 nits (cd/m2)
Resolution	1024 x 768 (XGA) Native	1280 x 1024 (SXGA) Native
Inputs	VGA, DVI, DisplayPort, HDMI, SDI, Composite	VGA, DVI, DisplayPort, HDMI, SDI, Composite
Operating Temperature Range	-30°C to 70°C (-22°F to 158°F)	-30°C to 85°C (-22°F to 185°F)
Rating	Rack Mountable	Rack Mountable

Sunlight Readable, Open Frame Chassis Mount LCDs

Model	SRD-CM-104	SRD-CM-150	SRD-CM-215
Display Size	10.4"	15.0"	21.5"
Brightness	1200 nits (cd/m2)	1600 nits (cd/m2)	1200 nits (cd/m2)
Resolution	1024 x 768 (XGA) Native	1024 x 768 (XGA) Native	1920 x 1080 (1080p) – True High-Definition
Inputs	VGA, DVI, DisplayPort, HDMI	VGA, DVI, DisplayPort, HDMI, SDI, Composite	VGA, DVI, DisplayPort, HDMI, SDI, Composite
Operating Temperature Range	-30°C to 75°C (-22°F to 167°F)	-30°C to 80°C (-22°F to 176°F)	-20°C to 70°C (-4°F to 158°F)
Rating	Open Frame	Open Frame	Open Frame



DETAILED SPECS

Integrated LCDs into Pelican Cases

Pelican Case mountable rugged monitors tailored to meet the needs of demanding environments such as remote controlling drones and/or ROV submersibles. These AbraxSys designs provide crystal-clear images with wide viewing angles, extended operational temperature capabilities, and visibility in direct sunlight. Choose from various case sizes, colors, power types, and video inputs and configurations; unparalleled durability in any environment.

Model	SRD-VR-185	A8104-185-1550	A8104-185-1560	A8104-215-1610	A8104-240-1770
Display Size	18.5"	18.5"	18.5"	21.5"	Dual 24.0"
Brightness	1500 nits (cd/m2)	1500 nits (cd/m2)	1500 nits (cd/m2)	1200 nits (cd/m2)	1500 nits (cd/m2)
Resolution	1920 x 1080 (1080p)	1920 x 1080 (1080p) – True High-Definition	1920 x 1080 (1080p) – True High-Definition	1920 x 1080 (1080p) – True High-Definition	1920 x 1080 (1080p)
Input Options	VGA, DVI, DisplayPort, HDMI, SDI, Composite	VGA, DVI, DisplayPort, HDMI, SDI, Composite	VGA, DVI, DisplayPort, HDMI, SDI, Composite	VGA, DVI, DisplayPort, HDMI, SDI, Composite	VGA, DVI, DisplayPort, HDMI, SDI, Composite
Operating Temperature Range	-20°C to 70°C (-4°F to 158°F)	-20°C to 70°C (-4°F to 158°F)	-20°C to 70°C (-4°F to 158°F)	-20°C to 70°C (-4°F to 158°F)	-20°C to +70°C (158°F)
Pelican Case Model	No Case	1550	1560	1610	1770



DETAILED SPECS

All-In-One Panel PCs

Simplify your workspace with our All-in-One Panel PCs, combining powerful computing and rugged display capabilities in a single, space-saving solution. These versatile systems are ideal for a wide range of applications, including industrial automation, control systems, and interactive kiosks. Customize your Panel PC with a range of processor options, storage capacities, and display sizes.

Panel Mount Computers

Model	PC2-PM-150	PC2-PM-170	PC2-PM-185
Display Size	15.0"	17.0"	18.5"
Brightness	500 nits (cd/m2)	350 nits (cd/m2)	500 nits (cd/m2)
Resolution	1024 x 768 (XGA) Native	1280 x 1024 (SXGA) Native	1920 x 1080 (1080p) – True High-Definition
Operating Temperature Range	-20°C to 60°C (-4°F to 140°F) Extended Operational Temperature Ranges Available	-10°C to 60°C (14°F to 140°F) Extended Operational Temperature Ranges Available	-20°C to 70°C (-4°F to 158°F) Extended Operational Temperature Ranges Available
Rating	NEMA 4 - IP65	NEMA 4 - IP65	NEMA 4 - IP65
CPU	Intel® Core™ i5-1145GRE (up to 4.1GHz, quad-core, 8M Cache, TDP: 28/15/12W) Tiger Lake 11th generation Intel Core processors	Intel® Core™ i5-1145GRE (up to 4.1GHz, quad-core, 8M Cache, TDP: 28/15/12W) Tiger Lake 11th generation Intel Core processors	Intel® Core™ i5-1145GRE (up to 4.1GHz, quad-core, 8M Cache, TDP: 28/15/12W) Tiger Lake 11th generation Intel Core processors
Storage	240GB Solid State (Optional larger capacity drives also available)	240GB Solid State (Optional larger capacity drives also available)	240GB Solid State (Optional larger capacity drives also available)
Memory	8GB expandable to 16GB or 32GB	8GB expandable to 16GB or 32GB	8GB expandable to 16GB or 32GB

Model	PC2-PM-190
Display Size	19.0"
Brightness	350 nits (cd/m2)
Resolution	1280 x 1024 (SXGA) Native
Operating Temperature Range	-20°C to 60°C (-4°F to 140°F) Extended Operational Temperature Ranges Available
Rating	NEMA 4 - IP65
CPU	Intel® Core™ i5-1145GRE (up to 4.1GHz, quad-core, 8M Cache, TDP: 28/15/12W) Tiger Lake 11th generation Intel Core processors
Storage	240GB Solid State (Optional larger capacity drives also available)
Memory	8GB expandable to 16GB or 32GB

Panel Mount Stainless Bezel Computers

Model	PC2-PS-150	PC2-PS-170	PC2-PS-185
Display Size	15.0"	17.0"	18.5"
Brightness	500 nits (cd/m2)	350 nits (cd/m2)	350 nits (cd/m2)
Resolution	1024 x 768 (XGA) Native	1280 x 1024 (SXGA) Native	1280 x 1024 (SXGA) Native
Operating Temperature Range	-20°C to 60°C (-4°F to 140°F) Extended Operational Temperature Ranges Available	-20°C to 70°C (-4°F to 158°F) Extended Operational Temperature Ranges Available	-20°C to 70°C (-4°F to 158°F) Extended Operational Temperature Ranges Available
Rating	NEMA 4X - IP66	NEMA 4X - IP66	NEMA 4X - IP66
CPU	Intel® Core™ i5-1145GRE (up to 4.1GHz, quad-core, 8M Cache, TDP: 28/15/12W) Tiger Lake 11th generation Intel Core processors	Intel® Core™ i5-1145GRE (up to 4.1GHz, quad-core, 8M Cache, TDP: 28/15/12W) Tiger Lake 11th generation Intel Core processors	Intel® Core™ i5-1145GRE (up to 4.1GHz, quad-core, 8M Cache, TDP: 28/15/12W) Tiger Lake 11th generation Intel Core processors
Storage	240GB Solid State (Optional larger capacity drives also available)	240GB Solid State (Optional larger capacity drives also available)	240GB Solid State (Optional larger capacity drives also available)
Memory	8GB expandable to 16GB or 32GB	8GB expandable to 16GB or 32GB	8GB expandable to 16GB or 32GB

Model	PC2-PS-190
Display Size	19.0"
Brightness	350 nits (cd/m2)
Resolution	1280 x 1024 (SXGA) Native
Operating Temperature Range	-10°C to 60°C (14°F to 140°F)
Rating	NEMA 4X - IP66
CPU	Intel® Core™ i5-1145GRE (up to 4.1GHz, quad-core, 8M Cache, TDP: 28/15/12W) Tiger Lake 11th generation Intel Core processors
Storage	240GB Solid State (Optional larger capacity drives also available)
Memory	8GB expandable to 16GB or 32GB

Sunlight Readable Panel Mount Computers

Model	SPC2-PM-150	SPC2-PM-170	SPC2-PM-185
Display Size	15.0"	17.0"	18.5"
Brightness	1600 nits (cd/m2)	1200 nits (cd/m2)	1500 nits (cd/m2)
Resolution	1024 x 768 (XGA) Native	1280 x 1024 (SXGA) Native	1920 x 1080 (1080p) – True High-Definition
Operating Temperature Range	-20°C to 60°C (-4°F to 140°F)	-20°C to 60°C (-4°F to 140°F)	-20°C to 60°C (-4°F to 140°F)
Rating	NEMA 4 - IP66	NEMA 4 - IP66	NEMA 4 - IP66
CPU	Intel® Core™ i5-1145GRE (up to 4.1GHz, quad-core, 8M Cache, TDP: 28/15/12W) Tiger Lake 11th generation Intel Core processors	Intel® Core™ i5-1145GRE (up to 4.1GHz, quad-core, 8M Cache, TDP: 28/15/12W) Tiger Lake 11th generation Intel Core processors	Intel® Core™ i5-1145GRE (up to 4.1GHz, quad-core, 8M Cache, TDP: 28/15/12W) Tiger Lake 11th generation Intel Core processors
Storage	240GB Solid State (Optional larger capacity drives also available)	240GB Solid State (Optional larger capacity drives also available)	240GB Solid State (Optional larger capacity drives also available)
Memory	8GB expandable to 16GB or 32GB	8GB expandable to 16GB or 32GB	8GB expandable to 16GB or 32GB

Model	SPC2-PM-190
Display Size	19.0"
Brightness	1600 nits (cd/m2)
Resolution	1280 x 1024 (SXGA) Native
Operating Temperature Range	-20°C to 60°C (-4°F to 140°F)
Rating	NEMA 4 - IP66
CPU	Intel® Core™ i5-1145GRE (up to 4.1GHz, quad-core, 8M Cache, TDP: 28/15/12W) Tiger Lake 11th generation Intel Core processors
Storage	240GB Solid State (Optional larger capacity drives also available)
Memory	8GB expandable to 16GB or 32GB

Sunlight Readable Panel Mount Stainless Bezel Computers

Model	SPC2-PS-150	SPC2-PS-170	SPC2-PS-185
Display Size	15.0"	17.0"	15.8"
Brightness	1600 nits (cd/m2)	1200 nits (cd/m2)	1500 nits (cd/m2)
Resolution	1024 x 768 (XGA) Native	1280 x 1024 (SXGA) Native	1920 x 1080 (1080p)
Operating Temperature Range	-20°C to 60°C (-4°F to 140°F)	-20°C to 60°C (-4°F to 140°F)	-20°C to 60°C (-4°F to 140°F)
Rating	NEMA 4X / IP65	NEMA 4X / IP65	NEMA 4X / IP65
CPU	Intel® Core™ i5-1145GRE (up to 4.1GHz, quad-core, 8M Cache, TDP: 28/15/12W) Tiger Lake 11th generation Intel Core processors	Intel® Core™ i5-1145GRE (up to 4.1GHz, quad-core, 8M Cache, TDP: 28/15/12W) Tiger Lake 11th generation Intel Core processors	Intel® Core™ i5-1145GRE (up to 4.1GHz, quad-core, 8M Cache, TDP: 28/15/12W) Tiger Lake 11th generation Intel Core processors
Storage	240GB Solid State (Optional larger capacity drives also available)	240GB Solid State (Optional larger capacity drives also available)	240GB Solid State (Optional larger capacity drives also available)
Memory	8GB expandable to 16GB or 32GB	8GB expandable to 16GB or 32GB	8GB expandable to 16GB or 32GB

Model	SPC2-PS-190
Display Size	19.0"
Brightness	1600 nits (cd/m2)
Resolution	1280 x 1024 (SXGA) Native
Operating Temperature Range	-20°C to 60°C (-4°F to 140°F)
Rating	NEMA 4X / IP65
CPU	Intel® Core™ i5-1145GRE (up to 4.1GHz, quad-core, 8M Cache, TDP: 28/15/12W) Tiger Lake 11th generation Intel Core processors
Storage	240GB Solid State (Optional larger capacity drives also available)
Memory	8GB expandable to 16GB or 32GB



For all other support questions or product issues, please contact AbraxSys at (800) 883-9050 or by email. info@abraxsyscorp.com



AbraxSys
RUGGED LCD SOLUTIONS

(800) 883-9050 | info@abraxsyscorp.com | www.abraxsyscorp.com

6161 Keller's Church Road, Units 6151B, 6161A, 6161B, 6171A & 6171B. Pipersville, Pennsylvania 18947 U.S.A.