



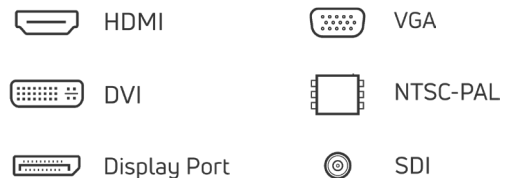
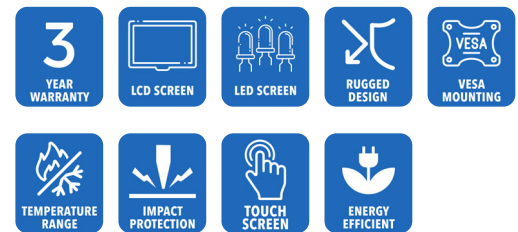
AbraxSys
RUGGED LCD SOLUTIONS

15" Industrial NEMA 12 (IP52) Rugged VESA Mount LCD

Model VM-150

Model VM-150 LCD monitor is a NEMA 12 (IP52) rated product and utilizes the latest 15" XGA TFT Flat Panels. AbraxSys has added a versatile Analog-Digital interface board, backlight inverter and OSD controls. All elements, including a toughened glass protective screen have been packaged in a compact, rugged metal housing. The result is a flexible Display Head, ready for integration as part of any system; as an analog monitor, or a touchscreen driven human-machine interface.

This rugged model offers exceptional shock and vibration safeguards and its housing is constructed of high grade aluminum which has been dipped in zinc-chromate and then finished with a resilient corrosive resistant thermal-set black powder-coating. This product is very ruggedly built, features long-life displays with no scheduled End Of Life. Incorporating the latest LCD and control electronics you are assured a display the will perform reliably in harsh industrial environments. Many configurations available, including our [Sun Readable SRD models](#).



Technical Specifications

General

Model:
VM-150

Display Size
15"

Display Type
Long-Life Industrial Grade LCD

Backlight Technology
Solid State, Long-Life LED –
[CLICK HERE](#) for more information

Brightness
500 nits (cd/m2)

Dimming Capabilities
Front Keypad, Can be Re-position
on the Rear of the Enclosure

Contrast Ratio
2500:1

Aspect Ratio
4:3

Resolution
1024 x 768 (XGA) Native

Colors Supported
16.7M (8-bit/color)

Viewing Angles
-88° to 88° Horizontal
-88° to 88° Vertical

Video Inputs
DVI, HD15 (VGA), DisplayPort,
Composite, S-Video, HD-SDI, HDMI

User Controls
Multi-Functional User Keypad

Optical Bonding
Optional Optical Bonding of Front
Protective Glass or Touch Screen
Window (for more information
about its benefits [CLICK HERE](#))

Protective Window
3mm Hardened Protective
Window, for more information
[CLICK HERE](#) (also available
various optional Touch Screen
Technologies)

Power Types
90 VAC to 264 VAC, 12V DC, 24V
DC, 9 to 36V DC, 20 to 53V DC

Physical Attributes

Front Bezel
Stainless Steel

Rear Enclosure
High Grade 6061T Aluminum,
Electrochemical Anodized for
added Corrosion Resistance,
Black Textured Finish per Military
Standards FED-STD-595

Panel Mounting
VESA 100mm

Overall Dimensions
11.098 x 15.15 x 2.37 in
(281.89 x 384.81 x 60.20mm)

Sunlight Readability
The latest optical technology for
high ambient light conditions

Warranty Period
3 Years

Environmental

Sunlight Readability
The latest optical technology for
high ambient light conditions

Operating Temperature Range
-40°C to 85°C (-40°F to 185°F)

Storage Temperature
-40°C to 85°C (-40°F to 185°F)

Humidity
5% to 95% RH (non-condensing)

Shock
Operating: 30g's, 11ms, ½ Sine,
Non-Operating: 200G, 2ms, half
sine wave, 1 time for ± X, ± Y, ± Z.

Vibration
Operating: 1g RMS 20-500Hz,
Non-Operating: 1.5G, 10 ~ 300 Hz,
10min/cycle, 3 cycles each X, Y, Z

Fasteners

Vibration-proof, self-locking, fastener system which will not loosen regardless of seat torque. Designed to help make products safer, lower warranty costs and prolong equipment life by eliminating vibration; increased safety, reliability, operating life and reduced maintenance.

EMI

FCC Class B pursuant to Part 15 of the FCC Rules

Agency Compliance

CE

Altitude

Operating 0 to 10,000 ft.
Storage 0 to 40,000 ft.

RoHS Compliant

Yes

Rating

NEMA 4X / IP66

Additional Add-On Options

Touch Screen Technology**Resistive****Multi-Touch 2-Point Resistive****Multi-Touch Up to 10-Point PCAP****Hardened Armored Touch Technology****Video Input Options**

DVI, HD15 (VGA), DisplayPort, HDMI, Composite, S-Video, SDI, and/or NTSC-PAL

Dimming Capabilities

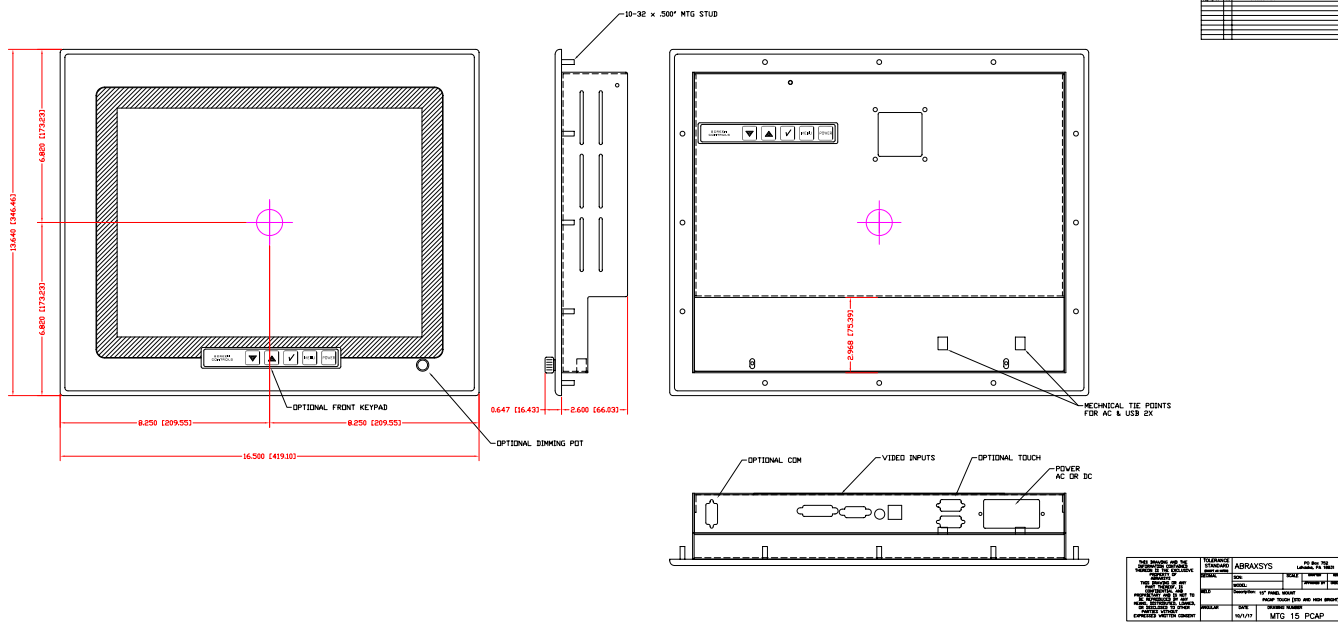
User Keypad (standard); Optional: Manual Full-Range, Automatic Dimming, or Remote Dimming

Custom Video Modes**Extended Operational Temperature Ranges****Power Type Choices**

90 VAC to 264 VAC; 12V DC; 24V DC; 9 to 36V DC; or 20 to 53V DC

Conformal Coating of all Internal Circuit Boards**Private Labeling Services****Customization Services****Sunlight Readable Model Available**

Mechanical Drawings



These technical and mechanical resources are subject to change without notice.



AbraxSys
RUGGED LCD SOLUTIONS

(800) 883-9050

info@abraxsyscorp.com

www.abraxsyscorp.com

6161 Keller's Church Road, Units 6151B, 6161A, 6161B, 6171A & 6171B
Pipersville, Pennsylvania 18947 U.S.A.