

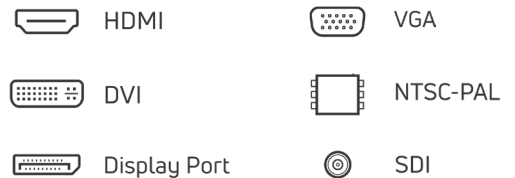
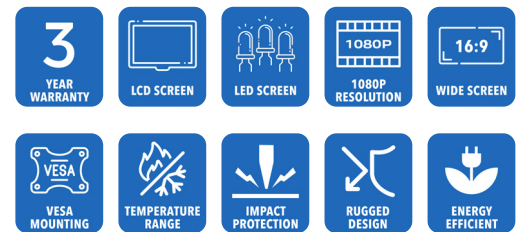


**AbraxSys**  
RUGGED LCD SOLUTIONS

# 13.3" Rugged Ultra-Low Profile VESA Mount Wide Format 1080P LCD Monitor

**Model VM-133-ULP**

Model VM-133-ULP LCD monitor is a versatile VESA mountable LCD and utilizes the latest 13.3" 1920 x 1080 resolution TFT Flat Panels. AbraxSys has added a versatile Analog-Digital interface board, backlight inverter and OSD controls. All elements, including a toughened glass protective screen have been packaged in a compact, rugged metal housing. The result is a flexible Display Head, ready for integration as part of any system; as an analog monitor, or a touchscreen driven human-machine interface. This rugged model offers exceptional shock and vibration safeguards and its housing is constructed of high grade aluminum which has been dipped in zinc-chromate and then finished with a resilient corrosive resistant thermal-set black powder-coating. This product is very ruggedly built, features long-life displays with no scheduled End Of Life. Incorporating the latest LCD and control electronics you are assured a display the will perform reliably in harsh industrial environments. Many configurations available, including our [Sun Readable SRD models](#).



# Technical Specifications

---

## General

**Model:**  
VM-133-ULP

**Display Size**  
13.3"

**Display Type**  
Long-Life Industrial Grade LCD

**Backlight Technology**  
Solid State, Long-Life LED –  
[CLICK HERE](#) for more information

**Brightness**  
400 nits (cd/m<sup>2</sup>)

**Dimming Capabilities**  
Multi-Functional User Keypad

**Contrast Ratio**  
800:1

**Aspect Ratio**  
16:9

**Resolution**  
1920 x 1080 (1080p)

**Colors Supported**  
16.7M (8-bit/color)

**Viewing Angles**  
-89° to 89° Horizontal  
-89° to 89° Vertical

**Video Inputs**  
DVI, HD15 (VGA), DisplayPort,  
Composite, S-Video, HD-SDI,  
4-Composite/NTSC-PAL, HDMI

**User Controls**  
Multi-Functional User Keypad

**Optical Bonding**  
Optional Optical Bonding of Front  
Protective Glass or Touch Screen  
Window (for more information  
about its benefits [CLICK HERE](#))

**Protective Window**  
3mm Hardened Protective  
Window, for more information  
[CLICK HERE](#) (also available  
various optional Touch Screen  
Technologies)

**Power Types**  
90 VAC to 264 VAC, 12V DC, 24V  
DC, 9 to 36V DC, 20 to 53V DC

---

## Physical Attributes

**Front Bezel**  
Stainless Steel

**Rear Enclosure**  
High Grade 6061T Aluminum,  
Electrochemical Anodized for  
added Corrosion Resistance,  
Black Textured Finish per Military  
Standards FED-STD-595

**Panel Mounting**  
VESA 100mm

**Sunlight Readability**  
The latest optical technology for  
high ambient light conditions

**Warranty Period**  
3 Years

---

## Environmental

**Sunlight Readability**  
The latest optical technology for  
high ambient light conditions

**Operating Temperature Range**  
-30°C to 70°C (-22°F to 158°F)

**Storage Temperature**  
-30°C to 70°C (-22°F to 158°F)

**Humidity**  
5% to 95% RH (non-condensing)

**Shock**  
Operating: 30g's, 11ms, ½ Sine,  
Non-Operating: 200G, 2ms, half  
sine wave, 1 time for ± X, ± Y, ± Z.

**Vibration**

Operating: 1g RMS 20-500Hz,  
Non-Operating: 1.5G, 10 ~ 300 Hz,  
10min/cycle, 3 cycles each X, Y, Z

**Fasteners**

Vibration-proof, self-locking,  
fastener system which will not  
loosen regardless of seat torque.  
Designed to help make products  
safer, lower warranty costs  
and prolong equipment life by  
eliminating vibration; increased  
safety, reliability, operating life  
and reduced maintenance.

**EMI**

FCC Class B pursuant to Part 15  
of the FCC Rules

**Agency Compliance**

CE

**Altitude**

Operating 0 to 10,000 ft.  
Storage 0 to 40,000 ft.

**RoHS Compliant**

Yes

**Rating**

NEMA 4X / IP66

---

## Additional Add-On Options

**Touch Screen Technology**

NEMA 4 – IP65

**Resistive****Multi-Touch 2-Point Resistive****Projected Capacitive (PCAP)****Multi-Touch Up to 10-Point PCAP****Hardened Armored Touch****Technology****Video Input Options**

DVI, HD15 (VGA), DisplayPort,  
Composite, S-Video, HD-SDI,  
4-Composite/NTSC-PAL, HDMI

**Dimming Capabilities**

User Keypad (standard); Optional:  
Manual Full-Range, Automatic  
Dimming, or Remote Dimming

**Custom Video Modes**

Various Mounts, Brackets  
or Arms including **RAM Mounts**

**Extended Operational  
Temperature Ranges****Power Type Choices**

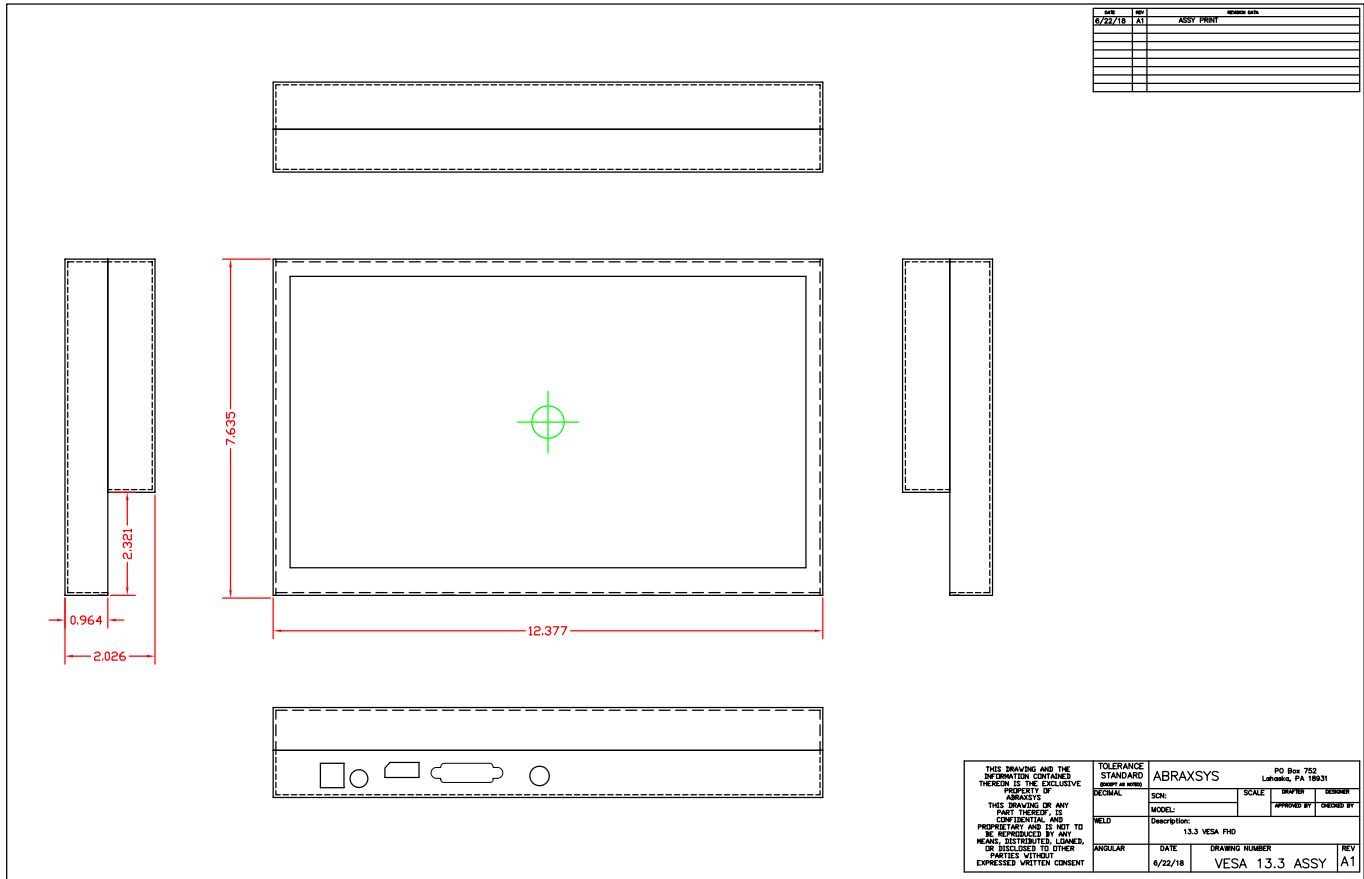
90 VAC to 264 VAC; 12V DC; 24V  
DC; 9 to 36V DC; or 20 to 53V DC

**Conformal Coating of all  
Internal Circuit Boards****Private Labeling Services****Customization Services**

UltraSlim 4K/60 HDMI 2.0  
Extender over HDBaseT™ up  
to 330ft & PoH Extend pristine  
4K/60 with HDR, 4:4:4 with  
bi-directional IR, RS-232 & LAN  
**Click for More Info.**

**Sunlight Readable  
Model Available**

# Mechanical Drawings



These technical and mechanical resources are subject to change without notice.



**AbraxSys**  
RUGGED LCD SOLUTIONS

(800) 883-9050

info@abraxsyscorp.com

www.abraxsyscorp.com

6161 Keller's Church Road, Units 6151B, 6161A, 6161B, 6171A & 6171B

Pipersville, Pennsylvania 18947 U.S.A.