



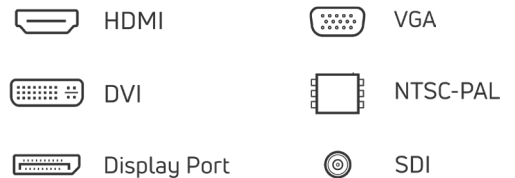
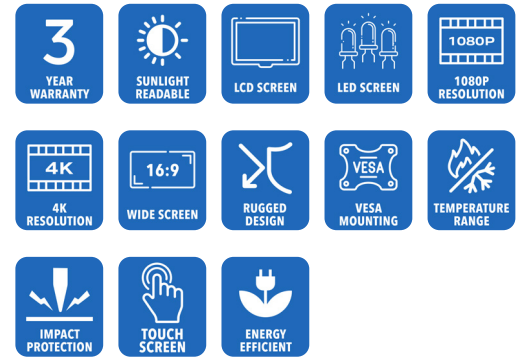
AbraxSys
RUGGED LCD SOLUTIONS

27" Sunlight Readable High-Bright Industrial Grade NEMA 12 (IP50) Rugged VESA Mount LCD Monitor

Model SRD-VM-270

AbraxSys Daylight Readable Industrial LCD Flat Panel Displays has been designed for harsh-duty applications which require either a 1080p Hi-Definition resolution or as an option a true 4K Ultra High-Definition (3840 x 2160) resolution. The monitor boasts very high-brightness images, 1000 nits (800 nits for 4K type) and a very wide operational temperature range.

Model SRD-VM-270 LCD monitor is a NEMA 12 (IP50) rated product and utilizes the latest 27" LCD Flat Panel. AbraxSys has added a versatile Analog-Digital interface board, backlight inverter and OSD controls. All elements, including a toughened glass protective screen have been packaged in a compact, rugged metal housing. The result is a flexible Display Head, ready for integration as part of any system; as an analog monitor, or a touchscreen driven human-machine interface.



Technical Specifications

General

Model
SRD-VM-270

Display Size
27.0"

Display Type
Long-Life Industrial Grade Active Matrix TFT LCD

Backlight Technology
Solid State, Long-Life LED, with Light Source Redundancy

Optical Films Enhancements
Boosts efficiency of the backlight's light utilization and minimizes the surface reflection of ambient light. The result is a transmissive enhancement that features higher contrast and a wider range of colors, even in bright outdoor light, than traditional reflective LCDs.

Brightness
1000 nits (cd/m²)

Contrast Ratio
1000:1

Aspect Ratio
16:9

Resolution
1920 x 1080 (FHD 1080P) or 3840 x 2160 (UHD 4K), panel configuration dependent

Colors Supported
16 Million for 1080P FHD version or 1.07 Billion Colors [10 bit color] for 3840 x 2160 4K typ

Viewing Angles
-89 to 89 Horizontal
-89° to 89° Vertical

Video Inputs
DVI, HD15 (VGA), HDMI, DisplayPort, S-Video, SDI, Composite

Protective Window
3mm Sparkle Free Front Protective Impact Window or Projected Capacitive Touch Screen

Power Types
90 VAC to 264 VAC; 12V DC; 24V DC; 9 to 36V DC; or 20 to 53V DC

Physical Attributes

Front Bezel
High Grade 6061T Aluminum, Electrochemical Anodized for added Corrosion Resistance, Black Textured Finish per Military Standards FED-STD-595

Overall Dimensions
17.377 x 26.279 x 3.067 in
(441.37 x 667.50 x 77.90 mm)

Rear Enclosure
High Grade 6061T Aluminum, Electrochemical Anodized for added Corrosion Resistance, Black Textured Finish per Military Standards FED-STD-595

Sunlight Readability
The latest optical technology for high ambient light conditions

Warranty Period
3 Years

Environmental

Sunlight Readability
The latest optical technology for high ambient light conditions

Operating Temperature Range
-20°C to 60°C (-4°F to 140°F)

Storage Temperature
-20°C to 60°C (-4°F to 140°F)

Humidity

5% to 95% RH (non-condensing)

Shock

Operating: 30g's, 11ms, ½ Sine

Vibration

1g RMS 20-500Hz

Fasteners

Vibration-proof, self-locking, fastener system

EMI

FCC Class B pursuant to Part 15 of the FCC Rules

Agency Compliance

CE

Altitude

Operating 0 to 10,000 ft.
Storage 0 to 40,000 ft.

RoHS Compliant

Yes

Rating

NEMA 12 / IP52

Additional Add-On Options

Touch Screen Technology**Resistive****Hardened Armored Touch Technology****Video Input Options**

DVI, HD15 (VGA), DisplayPort, HDMI, Composite, S-Video, HD-SDI, and/or NTSC-PAL

Customization Services**Extended Operational Temperature Ranges****Dimming Capabilities**

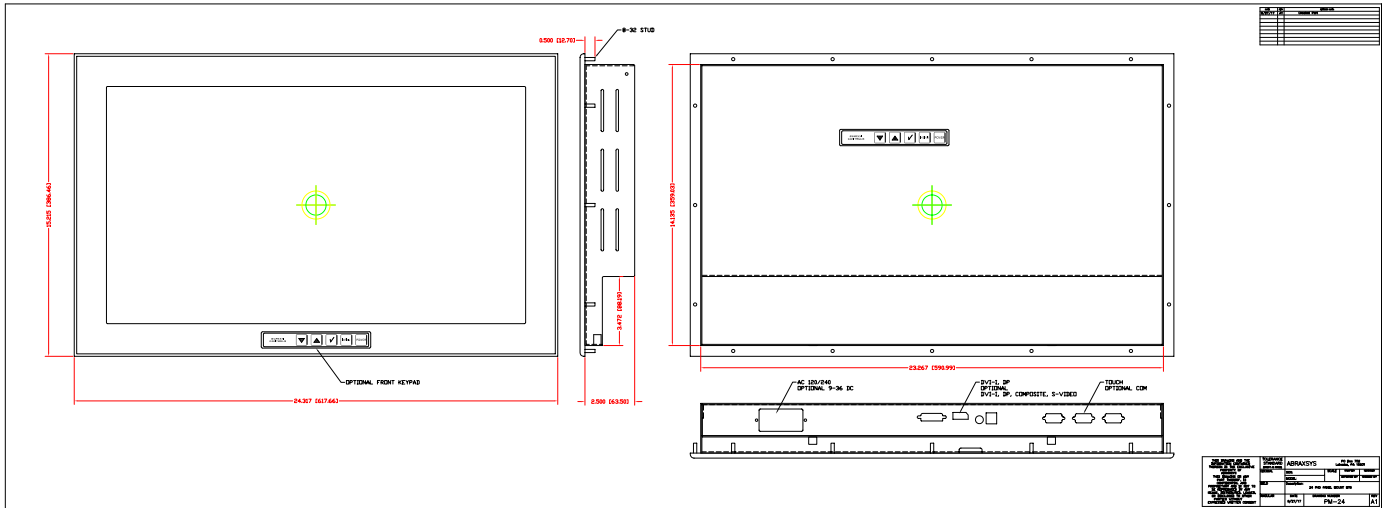
Standard, or Optional Full-Range
Manual Turn-Pot, Automatic
Dimming Sensor, Remote Dimming

Power Type Choices

90 VAC to 264 VAC; 12V DC; 24V DC; 9 to 36V DC; or 20 to 53V DC

Conformal Coating of all Internal Circuit Boards**Private Labeling Services****Custom Video Modes**

Mechanical Drawings



These technical and mechanical resources are subject to change without notice.



AbraxSys
RUGGED LCD SOLUTIONS

(800) 883-9050

info@abraxsyscorp.com

www.abraxsyscorp.com

6161 Keller's Church Road, Units 6151B, 6161A, 6161B, 6171A & 6171B
Pipersville, Pennsylvania 18947 U.S.A.