



**AbraxSys**  
RUGGED LCD SOLUTIONS

# 15" Sunlight Readable Industrial IP65 (NEMA 4) LCD Display Monitor

**Model SRD-PM-150**

Model PM-150 is a Second Generation model and is a high-quality industrial LCD system offering NEMA 4 (IP65) level protection at the front bezel. The product boasts a 15" display size with 1024 x 768 pixels, 500 nits brightness (long-life LED backlight) and Exceptional 2500:1 contrast ratio. The unit is constructed a black powder-coated gasket-sealed front bezel with "bolt" mounting.

This rugged model offers exceptional shock and vibration safeguards and its front bezel and rear housing are constructed of high grade aluminum which has been dipped in zinc-chromate and then finished with a resilient corrosive resistant thermal-set black powder-coating. This product is very ruggedly built, features long-life displays with no scheduled End Of Life. Incorporating the latest LCD and control electronics you are assured a display the will perform reliably in harsh industrial environments. Many configurations available, including our Sun Readable SRD models.

For systems configured with Projective Capacitive Touch Screen, the unit is fitted with an extra heavy duty .375" thick bezel. The front touch surface is optically bonded 2-point multi-touch glass for wear resistance and is flush with the front surface of the bezel for easy cleaning and NO pooling of liquids on or near the touch surface so touch conflict is eliminated.



- 3 YEAR WARRANTY
- SUNLIGHT READABLE
- IP65 WATERPROOF
- NEMA4
- LCD SCREEN
- LED SCREEN
- TEMPERATURE RANGE
- RUGGED DESIGN
- IMPACT PROTECTION
- TOUCH SCREEN
- ENERGY EFFICIENT

- HDMI
- VGA
- DVI
- NTSC-PAL
- Display Port
- SDI

# Technical Specifications

---

## General

**Model:**

SRD-PM-150

**Display Size**

15.0"

**Display Type**

Long-Life Industrial Grade Active Matrix TFT LCD

**Backlight Technology**

IPS (In-Plane Switching technology) panel, for more information [CLICK HERE](#)

**Optical Films Enhancements**

Boosts efficiency of the backlight's light utilization and minimizes the surface reflection of ambient light. The result is a transmissive enhancement that features higher contrast and a wider range of colors, even in bright outdoor light, than traditional reflective LCDs.

**Brightness**

1600 nits (cd/m<sup>2</sup>)

**Dimming Capabilities**

Deep Dimming Down to Black

**Contrast Ratio**

800:1

**Aspect Ratio**

4:3

**Resolution**

1024 x 768 (XGA) Native

**Colors Supported**

16.7 Million (8-bit/color)

**Viewing Angles**

-80° to 80° Horizontal  
-70° to 80° Vertical

**Video Inputs**

DVI, HD15 (VGA), HDMI, DisplayPort, S-Video, SDI, Composite

**User Controls**

Front Keypad (can also be configured for rear controls, or Manual Full-Range Dimming Turn Pot, Automatic Dimming Sensor, or Remote Dimming), Deep Dimming Down to Black

**Optical Bonding**

Optional Optical Bonding of Front Protective Glass or Touch Screen Window

**Protective Window**

3mm Hardened Protective Window, for more information [CLICK HERE](#) (also available various optional Touch Screen Technologies)

**Power Types**

90 VAC to 264 VAC; 12V DC; 24V DC; 9 to 36V DC; or 20 to 53V DC

---

## Physical Attributes

**Front Bezel**

High Grade 6061T Aluminum, Electrochemical Anodized for added Corrosion Resistance, Black Textured Finish per Military Standards FED-STD-595

**Rear Enclosure**

High Grade 6061T Aluminum, Electrochemical Anodized for added Corrosion Resistance, Black Textured Finish per Military Standards FED-STD-595

**Panel Mounting**

10-32 Stainless mounting studs, 1/2" exposed thread

**Overall Dimensions**

13.64 x 16.50 x 2.60 in  
(346.45 x 419.10 x 66.04mm)

**Cutout**

12.2 x 15.06 in  
(309.88 x 382.53mm)

**Weight**

13.2 lbs. (5.9 kg)

**Sealability**

NEMA 4X (IP66)

**Sunlight Readability**

The latest optical technology for high ambient light conditions

**Warranty Period**

3 Years

---

## Environmental

### Sunlight Readability

The latest optical technology for high ambient light conditions

### Operating Temperature Range

-30°C to 80°C (-22°F to 176°F)

### Storage Temperature

-30°C to 85°C (-22°F to 185°F)

### Humidity

5% to 95% RH (non-condensing)

### Shock

Operating: 30g's, 11ms, ½ Sine

### Vibration

1g RMS 20-500Hz

### Fasteners

Vibration-proof, self-locking, fastener system

### EMI

FCC Class B pursuant to Part 15 of the FCC Rules

### Agency Compliance

CE

### Altitude

Operating 0 to 10,000 ft.  
Storage 0 to 40,000 ft.

### RoHS Compliant

Yes

### Rating

NEMA 4 / IP65

---

## Additional Add-On Options

### Touch Screen Technology

#### Resistive

#### Multi-Touch Up to 10-Point PCAP

#### Hardened Armored Touch Technology

### Power Type Choices

90 VAC to 264 VAC; 12V DC; 24V DC; 9 to 36V DC; or 20 to 53V DC

### Video Input Options

DVI, HD15 (VGA), DisplayPort, HDMI, Composite, S-Video, SDI, and/or NTSC-PAL

### Custom Video Modes

### Extended Operational Temperature Ranges

### Conformal Coating of all Internal Circuit Boards

### Customization Services

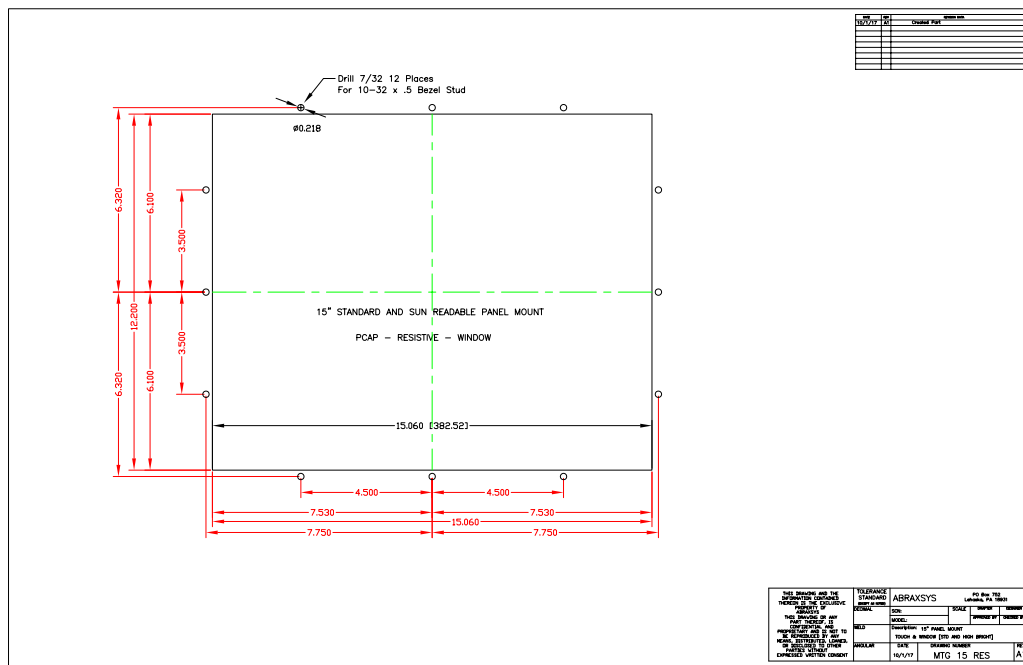
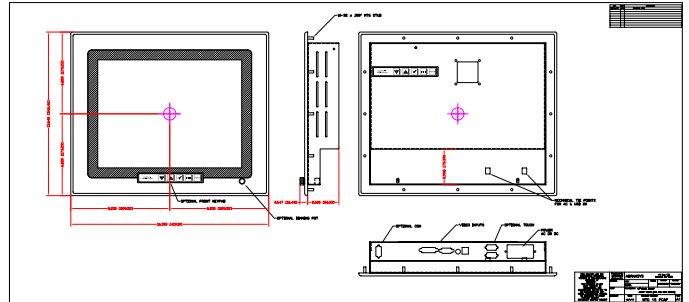
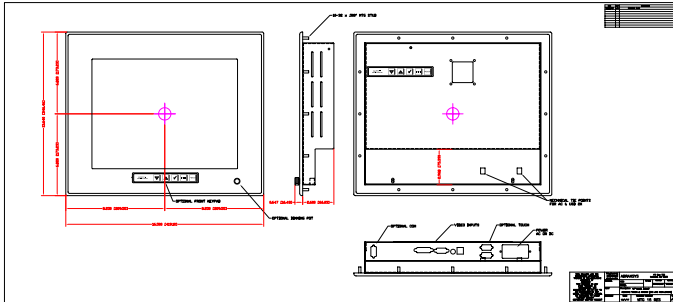
#### Dimming Capabilities

Standard, or Optional Full-Range Manual Turn-Pot, Automatic Dimming Sensor, Remote Dimming

#### NEMA 4X IP66 Stainless Steel Front Bezel

#### Private Labeling Services

# Mechanical Drawings



These technical and mechanical resources are subject to change without notice.



**AbraxSys**  
RUGGED LCD SOLUTIONS

(800) 883-9050

info@abraxsyscorp.com

www.abraxsyscorp.com

6161 Keller's Church Road, Units 6151B, 6161A, 6161B, 6171A & 6171B  
Pipersville, Pennsylvania 18947 U.S.A.