



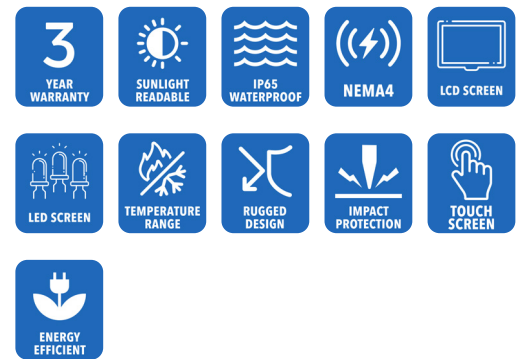
AbraxSys
RUGGED LCD SOLUTIONS

10.4" Industrial Grade Sunlight Readable High Brightness NEMA 4 (IP65) Panel Mount LCD Display

Model SRD-PM-104

Model SRD-PM-104 is a Second Generation Sunlight Readable High Brightness model and is a high-quality industrial LCD system offering NEMA 4 (IP65) level protection at the front bezel. The product boasts a 10.4" display size with 1024 x 768 pixels, 1300 nits brightness (long-life LED backlight) and 700:1 contrast ratio.

This industrial grade Sunlight Readable NEMA 4 IP65 LCD TFT monitor is designed for use throughout a wide range of harsh outdoor applications. These rugged LCD displays are rigorously tested to ensure compliance with various industry standards and are engineered to withstand the effects of severe environments such as water, dust and dirt intrusion. These products perform well beyond ordinary 'commercial' type monitors. AbraxSys' high bright Sunlight Readable LCDs are ideal for use in any high ambient light condition, and will give you the intensity and brilliance your application requires.



 HDMI

 VGA

 DVI

 Display Port

Technical Specifications

General

Model:
SRD-PM-104

Display Size
10.4"

Display Type
Long-Life Industrial Grade Active Matrix TFT LCD

Backlight Technology
Solid State, Long-Life LED

Optical Films Enhancements
Boosts efficiency of the backlight's light utilization and minimizes the surface reflection of ambient light. The result is a transmissive enhancement that features higher contrast and a wider range of colors, even in bright outdoor light, than traditional reflective LCDs.

Brightness
1300 nits (cd/m2)

Dimming Capabilities
Deep Dimming Down to Black

Contrast Ratio
700:1

Aspect Ratio
4:3

Resolution
1024 x 768 (XGA) Native

Colors Supported
16 Million

Viewing Angles
-85° to 85° Horizontal
-85° to 85° Vertical

Video Inputs
DVI, HD15 (VGA), HDMI, DisplayPort

User Controls
Front Keypad (can also be configured for rear controls), or Remote Dimming, or Manual Full-Range Dimming Turn Pot, Automatic Dimming Sensor, Deep Dimming Down to Black

Optical Bonding
Optional Optical Bonding of Front Protective Glass or Touch Screen Window

Protective Window
3mm Hardened Protective Window, for more information [CLICK HERE](#) (also available various optional Touch Screen Technologies)

Power Types
90 VAC to 264 VAC; 12V DC; 24V DC; 9 to 36V DC; or 20 to 53V DC

Physical Attributes

Front Bezel
High Grade 6061T Aluminum, Electrochemical Anodized for added Corrosion Resistance, Black Textured Finish per Military Standards FED-STD-595

Rear Enclosure
High Grade 6061T Aluminum, Electrochemical Anodized for added Corrosion Resistance, Black Textured Finish per Military Standards FED-STD-595

Panel Mounting
10-32 Stainless Mounting Studs, 1/2" Exposed Thread

Sealability
NEMA 4 (IP65)

Sunlight Readability
The latest optical technology for high ambient light conditions

Warranty Period
1 Year

Environmental

Sunlight Readability

The latest optical technology for high ambient light conditions

Operating Temperature Range

-30°C to 85°C (-22°F to 185°F)

Storage Temperature

-40°C to 85°C (-40°F to 185°F)

Humidity

5% to 95% RH (non-condensing)

Shock

Operating: 30g's, 11ms, ½ Sine

Vibration

1g RMS 20-500Hz

Fasteners

Vibration-proof, self-locking, fastener system

EMI

FCC Class B pursuant to Part 15 of the FCC Rules

Agency Compliance

CE

Altitude

Operating 0 to 10,000 ft.
Storage 0 to 40,000 ft.

RoHS Compliant

Yes

Rating

NEMA 4 / IP65

Additional Add-On Options

Touch Screen Technology

Resistive

Multi-Touch Up to 10-Point PCAP

Hardened Armored Touch Technology

Video Input Options

DVI, HD15 (VGA), DisplayPort, and/or HDMI

Custom Video Modes

Extended Operational Temperature Ranges

Conformal Coating of all Internal Circuit Boards

Power Type Choices

90 VAC to 264 VAC; 12V DC; 24V DC; 9 to 36V DC; or 20 to 53V DC

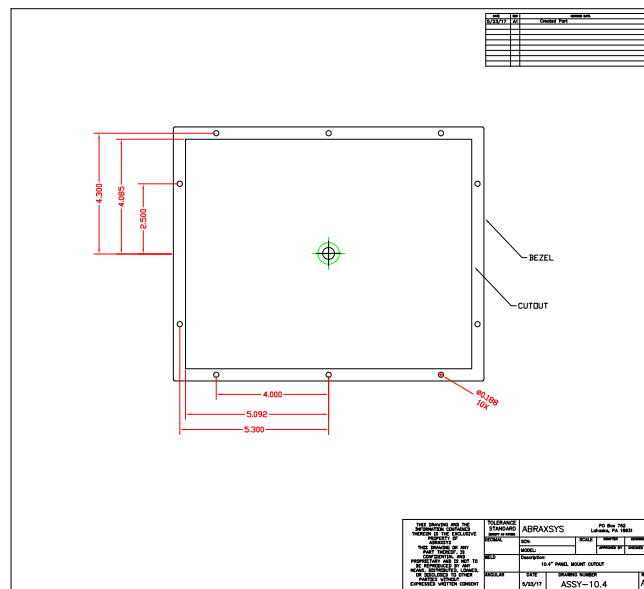
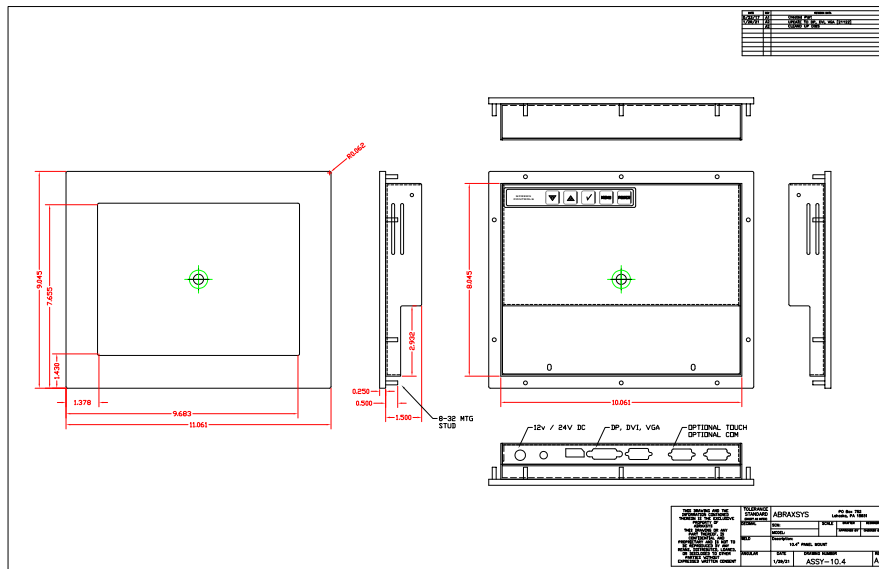
Private Labeling Services

Customization Services

Dimming Capabilities

Standard, or Optional Full-Range Manual Turn-Pot, Automatic Dimming Sensor, Remote Dimming

Mechanical Drawings



These technical and mechanical resources are subject to change without notice.



AbraxSys
RUGGED LCD SOLUTIONS

(800) 883-9050

info@abraxsyscorp.com

www.abraxsyscorp.com

6161 Keller's Church Road, Units 6151B, 6161A, 6161B, 6171A & 6171B
Pipersville, Pennsylvania 18947 U.S.A.