



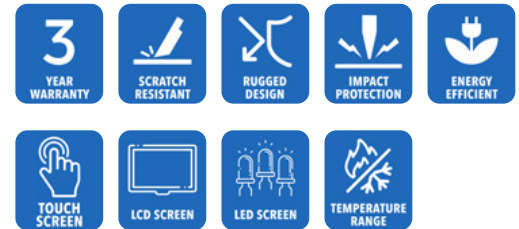
**AbraxSys**  
RUGGED LCD SOLUTIONS

# 15" Industrial Grade Rack Mount LCD Flat Panel Display

**RM-150**

Model RM-150 is a high-quality industrial grade 19 wide rack mountable LCD monitor. The product boasts a 15 display size with 1024 x 768 pixels, 500 nits brightness (long-life LED backlight) and Exceptional 2500:1 contrast ratio.

This rugged model offers exceptional shock and vibration safeguards and its front bezel and rear housing are constructed of 6061 grade aluminum which has been dipped in zinc-chromate and then finished with a resilient corrosive resistant thermal-set black powder-coating. This product is very ruggedly built, features long-life displays with no scheduled End Of Life. Incorporating the latest LCD and control electronics you are assured a display the will perform reliably in harsh industrial environments. Many configurations available, including our Sun Readable SRD models.



# Technical Specifications

---

## General

**Model**

RM-150

**Display Size**

15.0"

**Display Type**

Long-Life Industrial Grade Active Matrix TFT LCD

**Backlight Technology**

Solid State, Long-Life LED – [CLICK HERE](#) for more information

**Brightness**

500 nits (cd/m2)

**Dimming Capabilities**

Front Keypad (can also be configured for rear controls)

**Contrast Ratio**

Exceptional 2500:1

**Aspect Ratio**

4:3

**Resolution**

1024 x 768 (XGA) Native

**Colors Supported**

16.7M (8-bit/color)

**Viewing Angles**

-88° / 88° Horizontal

-88° / 88° Vertical

**Video Inputs**

DVI, HD15 (VGA), DisplayPort, Composite, HDMI, S-Video, SDI

**User Controls**

Front Keypad (can also be configured for rear controls)

**Protective Window**

3mm Hardened Protective Window, for more information

[CLICK HERE](#) (also available various optional Touch Screen Technologies)

**Power Types**

90 VAC to 264 VAC, 12V DC, 24V DC, 9 to 36V DC, 20 to 53V DC

---

## Physical Attributes

**Front Bezel**

High Grade 6061T Aluminum, Electrochemical Anodized for added Corrosion Resistance, Black Textured Finish per Military Standards FED-STD-595

**Rear Enclosure**

High Grade 6061T Aluminum, Electrochemical Anodized for added Corrosion Resistance, Black Textured Finish per Military Standards FED-STD-595

**Overall Dimensions**

12.220 x 18.28 x 2.60 in  
(310.39 x 462.99 x 66.04mm)

**Weight**

15 lbs. (6.8 Kg)

**Warranty Period**

3 Years

---

## Environmental

**Operating Temperature Range**

-30°C to 70°C (-22°F to 158°F)

**Storage Temperature**

-40°C to 85°C (-40°F to 185°F)

**Humidity**

5% to 95% RH (non-condensing)

**Shock**

Operating: 30g's, 11ms, ½ Sine  
Non-Operating: 200G, 2ms, half sine wave, 1 time for ± X, ± Y, ± Z.

**Vibration**

Operating: 1g RMS 20-500Hz,  
Non-Operating: 1.5G, 10 ~ 300 Hz, 10min/cycle, 3 cycles each X, Y, Z

**Fasteners**

Vibration-proof, self-locking, fastener system which will not loosen regardless of seat torque. Designed to help make products safer, lower warranty costs and prolong equipment life by eliminating vibration; increased safety, reliability, operating life and reduced maintenance.

**EMI**

FCC Class B pursuant to Part 15 of the FCC Rules

**Agency Compliance**

CE

**Altitude**

Operating 0 to 10,000 ft.  
Storage 0 to 40,000 ft.

**RoHS Compliant**

Yes

**Rating**

NEMA 4 / IP65

---

## Additional Add-On Options

**Touch Screen Technology**

(USB or Serial): Links to the various touch technologies

**Resistive****Multi-Touch 2-Point Resistive****Hardened Armored Touch Technology****Video Input Options**

DVI, HD15 (VGA), DisplayPort, Composite, S-Video, HD-SDI, 4-Composite/NTSC-PAL, HDMI

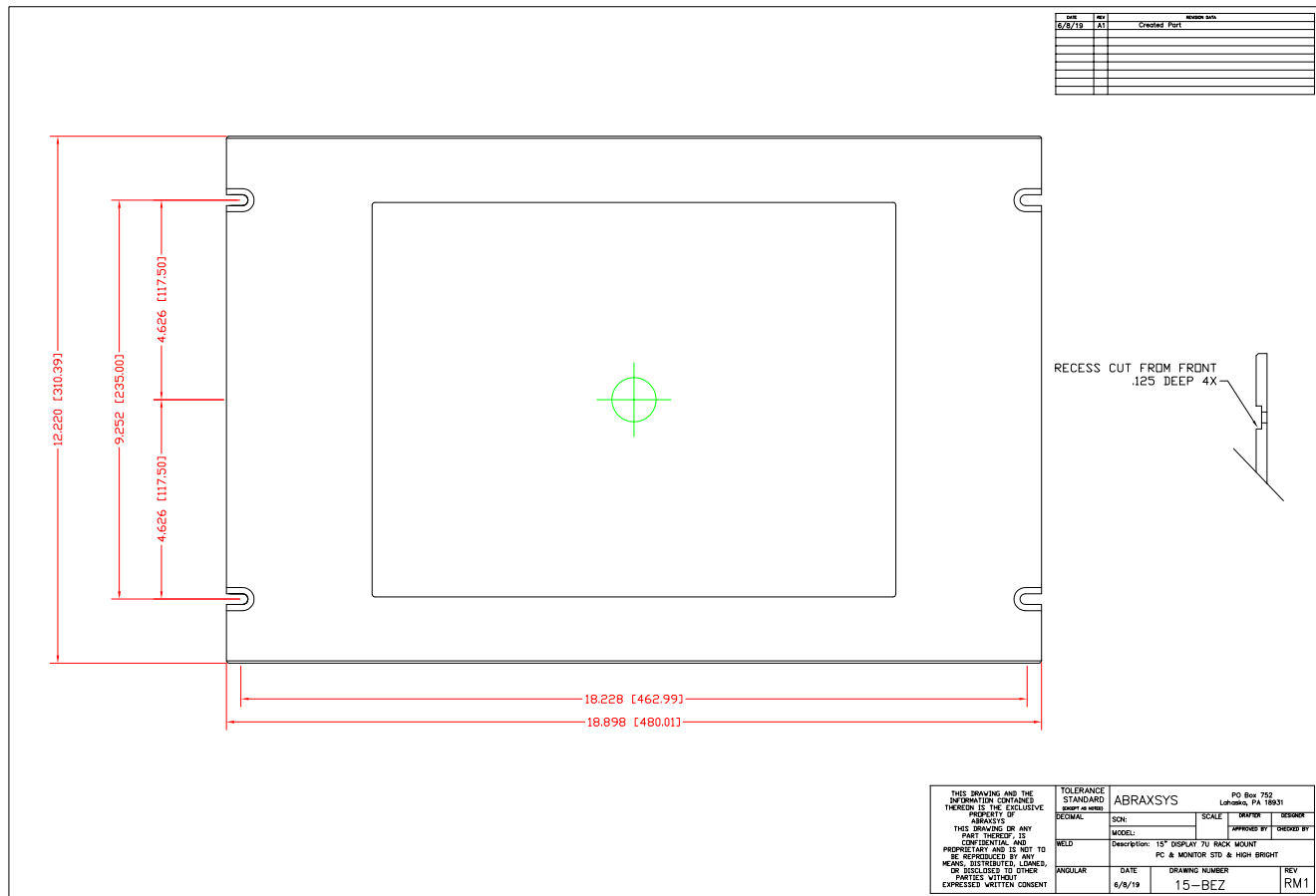
**Dimming Capabilities**

User Keypad (standard); Optional: Manual Full-Range, Automatic Dimming, or Remote Dimming

**Extended Operational Temperature Ranges****Custom Video Modes****Power Type Choices**

90 VAC to 264 VAC; 12V DC; 24V DC; 9 to 36V DC; or 20 to 53V DC

# Mechanical Drawings



These technical and mechanical resources are subject to change without notice.



**AbraxSys**  
RUGGED LCD SOLUTIONS

(800) 883-9050

info@abraxsyscorp.com

www.abraxsyscorp.com

6161 Keller's Church Road, Units 6151B, 6161A, 6161B, 6171A & 6171B  
Pipersville, Pennsylvania 18947 U.S.A.