



AbraxSys
RUGGED LCD SOLUTIONS


19" Industrial Grade NEMA 4 (IP65) LCD TFT Display

Model PM-190

Model PM-190 is a high-quality industrial LCD system offering NEMA 4 (IP65) level protection at the front bezel. The product boasts a 19" display size with 1280 x 1024 pixels, 450 NITS brightness, long-life LED backlighting, and 1000:1 contrast ratio. The unit is constructed with a black powder-coated gasket-sealed front bezel with "bolt" mounting.

This rugged model offers exceptional shock and vibration safeguards and its front bezel and rear housing are constructed of high grade metal which has been dipped in zinc-chromate and then finished with a resilient corrosive resistant thermal-set black powder-coating. This product is very ruggedly built, features long-life displays with no scheduled End Of Life. Incorporating the latest LCD and control electronics you are assured a display the will perform reliably in many real-world harsh industrial environments. Many optional configurations available, including our [Sunlight Viewable Display models](#).



-  HDMI
-  VGA
-  DVI
-  S-Video
-  Display Port
-  SDI
-  Composite

Technical Specifications

General

Model:
SRD-PM-190

Display Size
19.0"

Display Type
Long-Life Industrial Grade Active Matrix TFT LCD

Backlight Technology
Solid State, Long-Life LED
[CLICK HERE](#) for more information

Brightness
450 nits (cd/m)

Dimming Capabilities
User Keypad (standard); Optional: Manual Full-Range, Automatic Dimming, or Remote Dimming

Contrast Ratio
1000:1

Aspect Ratio
5:4

Resolution
1280 x 1024 (SXGA) Native

Colors Supported
16.7M (8-bit/color)

Viewing Angles
-85° / 85° Horizontal,
-80° / 80° Vertical

Video Inputs
DVI, HD15 (VGA), HDMI,
DisplayPort, S-Video, SDI,
Composite

User Controls
Multi-Functional User Keypad

Optical Bonding
Optical Bonding

Protective Window
3mm Hardened Protective Window, for more information [CLICK HERE](#) (also available various optional Touch Screen Technologies)

Power Types
90 VAC to 264 VAC; 12V DC; 24V DC; 9 to 36V DC; or 20 to 53V DC

Physical Attributes

Front Bezel
High Grade 6061T Aluminum, Electrochemical Anodized for added Corrosion Resistance, Black Textured Finish per Military Standards FED-STD-595

Rear Enclosure
High Grade 6061T Aluminum, Electrochemical Anodized for added Corrosion Resistance, Black Textured Finish per Military Standards FED-STD-595

Panel Mounting
10-32 Stainless mounting studs, 1/2" exposed thread

Overall Dimensions
19.00 x 15.720 x 2.60 in
(482.6 x 399 x 66mm)

Cutout
14.582 x 17.862 in
(370.38 x 453.69 mm)

Weight
See Drawings

Sealability
NEMA 4 (IP65)

Sunlight Readability
Sunlight Readable Model Available

Warranty Period
3 Years

Environmental

Sunlight Readability
Sunlight Readable Model Available

Operating Temperature Range
-30°C to 85°C (-22°F to 185°F)

Storage Temperature
-30°C to 85°C (-22°F to 185°F)

Humidity

5% to 95% RH (non-condensing)

Shock

Operating: 30g's, 11ms, ½ Sine

Vibration

1g RMS 20-500Hz

Fasteners

Vibration-proof, self-locking, fastener system

EMI

FCC Class B pursuant to Part 15 of the FCC Rules

Agency Compliance

CE

Altitude

Operating 0 to 10,000 ft. / Storage 0 to 40,000 ft.

RoHS Compliant

Yes

Rating

NEMA 4 / IP65

Additional Add-On Options

Touch Screen Technology:

Resistive

Multi-Touch 2-Point Resistive

Multi-Touch Up to 10-Point PCAP

Hardened Armored Touch Technology

Video Input Options

DVI, HD15 (VGA), DisplayPort, HDMI, Composite, S-Video, SDI, and/or NTSC/PAL

Custom Video Modes

Extended Operational Temperature Ranges

Conformal Coating of all Internal Circuit Boards

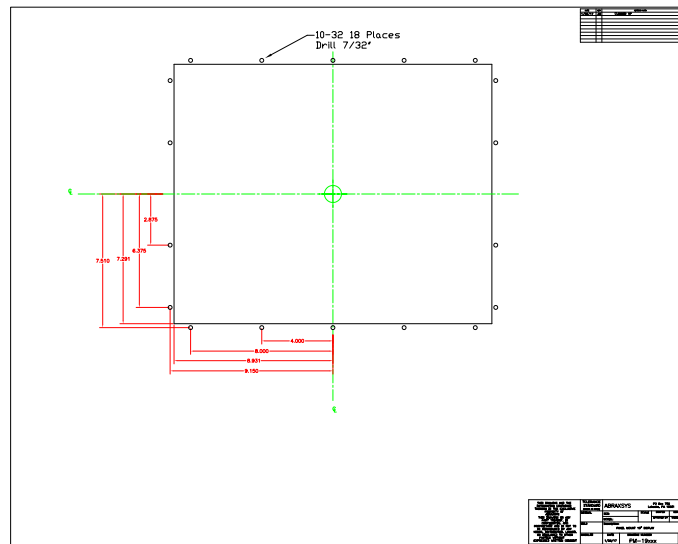
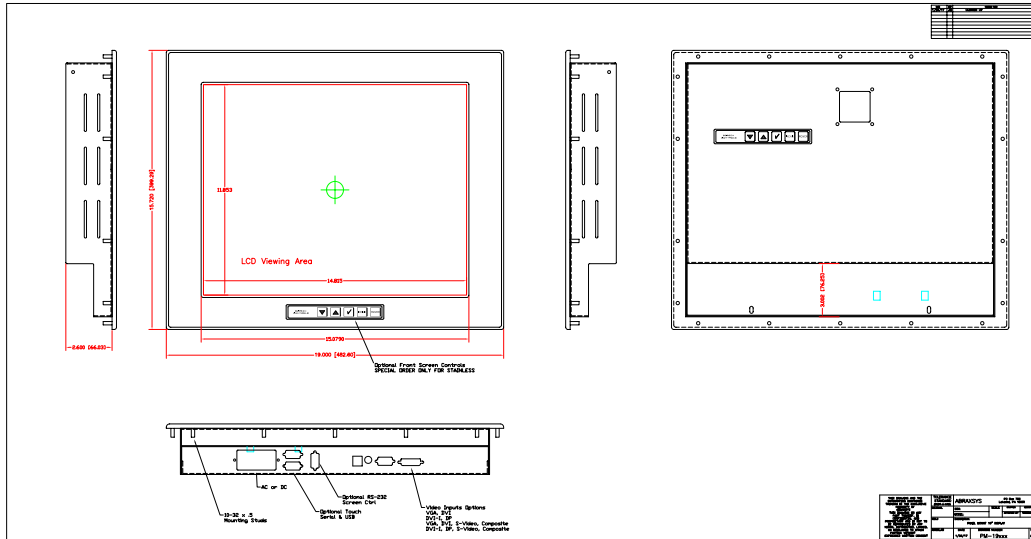
Private Labeling Services

Customization Services

NEMA 4X (IP66) Stainless Steel Front Bezel

Sunlight Readable Model Available

Mechanical Drawings



These technical and mechanical resources are subject to change without notice.



AbraxSys
RUGGED LCD SOLUTIONS

(800) 883-9050

info@abraxsyscorp.com

www.abraxsyscorp.com

6161 Keller's Church Road, Units 6151B, 6161A, 6161B, 6171A & 6171B
Pipersville, Pennsylvania 18947 U.S.A.