



AbraxSys
RUGGED LCD SOLUTIONS

18.5" Ultra-Rugged VESA Mount Wide Format 1080P Panel Mount LCD Monitor

Model SRD-VM-185

Model VM-185 LCD monitor is a versatile VESA mountable LCD and utilizes the latest 18.5" 1920 x 1080 resolution TFT Flat Panels. AbraxSys has added a versatile Analog-Digital interface board, backlight inverter and OSD controls. All elements, including a toughened glass protective screen have been packaged in a compact, rugged metal housing. The result is a flexible Display Head, ready for integration as part of any system; as an analog monitor, or a touchscreen driven human-machine interface.

This rugged model offers exceptional shock and vibration safeguards and its housing is constructed of high grade aluminum which has been dipped in zinc-chromate and then finished with a resilient corrosive resistant thermal-set black powder-coating. This product is very ruggedly built, features long-life displays with no scheduled End Of Life. Incorporating the latest LCD and control electronics you are assured a display the will perform reliably in harsh industrial environments. Many configurations available, including our [Sunlight Readable SRD model](#)



- 3 YEAR WARRANTY
- LCD SCREEN
- LED SCREEN
- 1080P RESOLUTION
- 16:9 WIDE SCREEN
- VESA MOUNTING
- RUGGED DESIGN
- TEMPERATURE RANGE
- IMPACT PROTECTION
- TOUCH SCREEN
- ENERGY EFFICIENT

	HDMI		VGA
	DVI		NTSC-PAL
	Display Port		SDI

Technical Specifications

General

Model:
SRD-VM-185

Display Size
18.5"

Display Type
Long-Life Industrial Grade Active Matrix TFT LCD

Backlight Technology
Solid State, Long-Life LED, with Light Source Redundancy

Optical Films Enhancements
Boosts efficiency of the backlight's light utilization and minimizes the surface reflection of ambient light. The result is a transmissive enhancement that features higher contrast and a wider range of colors, even in bright outdoor light, than traditional reflective LCDs.

Brightness
1500 nits (cd/m²)

Contrast Ratio
1000:1

Aspect Ratio
16:9

Resolution
1920 x 1080 (1080p)

Colors Supported
16.7M (8-bit/color)

Viewing Angles
-89° to 89° Horizontal
-89° to 89° Vertical

Video Inputs
DVI, HD15 (VGA), HDMI, DisplayPort, S-Video, SDI, Composite

User Controls
Multi-Functional User Keypad

Protective Window
3mm Sparkle Free Front
Protective Impact Window or Projected Capacitive Touch Screen

Power Types
90 VAC to 264 VAC; 12V DC; 24V DC; 9 to 36V DC; or 20 to 53V DC

Physical Attributes

Front Bezel
High Grade 6061T Aluminum, Electrochemical Anodized for added Corrosion Resistance, Black Textured Finish per Military Standards FED-STD-595

Rear Enclosure
High Grade 6061T Aluminum, Electrochemical Anodized for added Corrosion Resistance, Black Textured Finish per Military Standards FED-STD-595

Sealability
NEMA 12

Sunlight Readability
The latest optical technology for high ambient light conditions

Overall Dimensions
See Drawings

Warranty Period
3 Years

Environmental

Sunlight Readability
The latest optical technology for high ambient light conditions

Operating Temperature Range
-20°C to 70°C (158°F)

Storage Temperature
-20°C to 70°C (158°F)

Humidity
5% to 95% RH (non-condensing)

Shock
Operating: 30g's, 11ms, ½ Sine

Vibration
1g RMS 20-500Hz

Fasteners

Vibration-proof, self-locking, fastener system

EMI

FCC Class B pursuant to Part 15 of the FCC Rules

Agency Compliance

CE

Altitude

Operating 0 to 10,000 ft.
/ Storage 0 to 40,000 ft.

RoHS Compliant

Yes

Rating

NEMA 12 / IP50

Additional Add-On Options

Touch Screen Technology**Resistive****Multi-Touch Up to 10-Point PCAP****Hardened Armored Touch Technology****Power Type Choices**

90 VAC to 264 VAC; 12V DC; 24V DC; 9 to 36V DC; or 20 to 53V DC

Video Input Options

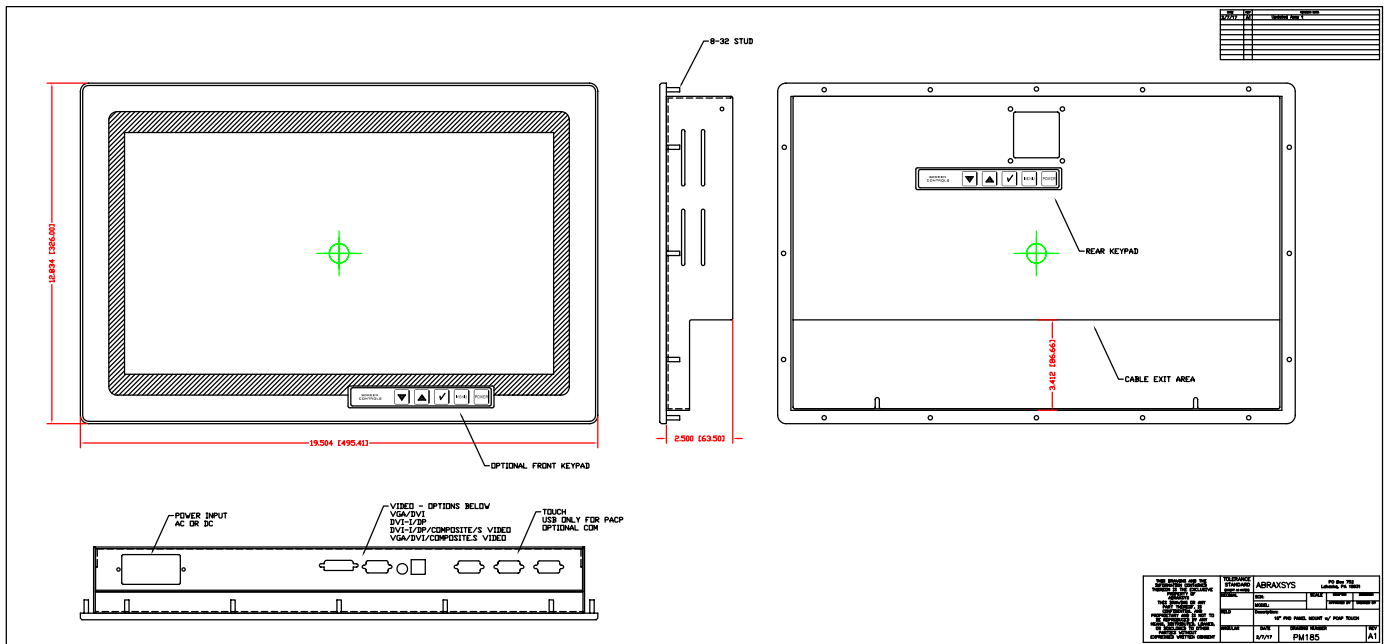
DVI, HD15 (VGA), DisplayPort, HDMI, Composite, S-Video, HD-SDI, and/or NTSC-PAL

Custom Video Modes**Extended Operational Temperature Ranges****Customization Services****Dimming Capabilities**

Standard, or Optional Full-Range Manual Turn-Pot, Automatic Dimming Sensor, Remote Dimming

Conformal Coating of all Internal Circuit Boards**Private Labeling Services**

Mechanical Drawings



These technical and mechanical resources are subject to change without notice.



AbraxSys
RUGGED LCD SOLUTIONS

(800) 883-9050

info@abraxsyscorp.com

www.abraxsyscorp.com

6161 Keller's Church Road, Units 6151B, 6161A, 6161B, 6171A & 6171B
Pipersville, Pennsylvania 18947 U.S.A.