



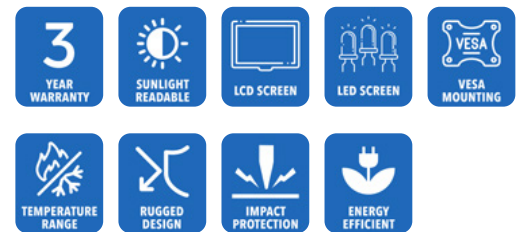
**AbraxSys**  
RUGGED LCD SOLUTIONS

# 15" Industrial Grade, Sunlight Readable, Rugged, Low-Profile VESA Mount LCD Monitor

**Model SRD-VMLP-150**

Model SRD-VMLP-150 LCD monitor is a narrow bezel NEMA 12 (IP52) rated Sunlight Readable product and utilizes the latest 15" XGA TFT Flat Panel and integrated with the AbraxSys enhanced LED high-luminance backlight technology producing 1600 nits. AbraxSys has added a versatile Analog-Digital interface board, backlight inverter and OSD controls. All elements, including a toughened glass protective screen have been packaged in a compact, rugged metal housing. The result is a flexible Display Head, ready for integration as part of any system; as an analog monitor, or a touchscreen driven human-machine interface. This model boasts exceptional sunlight readability.

This industrial grade Sunlight Readable NEMA 12 IP52 LCD TFT monitor is designed for use throughout a wide range of harsh applications. These rugged LCD displays are rigorously tested to ensure compliance with various industry standards and are engineered to withstand the effects of severe environments such as water, dust and dirt intrusion. These products perform well beyond ordinary 'commercial' type monitors. AbraxSys' high bright Sunlight Readable LCDs are ideal for use in any high ambient light condition, and will give you the intensity and brilliance your application requires.



 HDMI

 VGA

 DVI

 Display Port

# Technical Specifications

---

## General

**Model:**

SRD-VMLP-150

**Display Size**

15.0"

**Display Type**

Long-Life Industrial Grade LCD

**Backlight Technology**

Solid State, Long-Life LED, with Light Source Redundancy

**Optical Films Enhancements**

Boosts efficiency of the backlight's light utilization and minimizes the surface reflection of ambient light. The result is a transmissive enhancement that features higher contrast and a wider range of colors, even in bright outdoor light, than traditional reflective LCDs.

**Brightness**

1600 nits (cd/m<sup>2</sup>)

**Dimming Capabilities**

Deep Dimming Down to Black (optional)

**Contrast Ratio**

800:1

**Aspect Ratio**

4:3

**Resolution**

1024 x 768 (XGA) Native

**Colors Supported**

16.7M (8-bit/color)

**Viewing Angles**

-80° / 80° Horizontal  
-70° / 80° Vertical

**Video Inputs**

DVI, HD15 (VGA), HDMI, DisplayPort, S-Video, Composite

**User Controls**

Front Keypad (can also be configured for rear controls, or Manual Full-Range Dimming Turn Pot, Automatic Dimming Sensor, or Remote Dimming)

**Optical Bonding**

Standard Feature: Optical Bonding of PCAP Touch Screen Window to the Face of the LCD

**Protective Window**

3mm Sparkle Free Front Protective Impact Window or Projected Capacitive Touch Screen

**Power Types**

90 VAC to 264 VAC, 12V DC, 24V DC, 9 to 36V DC, 20 to 53V DC

---

## Physical Attributes

**Front Bezel**

High Grade 6061T Aluminum, Electrochemical Anodized for added Corrosion Resistance, Black Textured Finish per Military Standards FED-STD-595

**Rear Enclosure**

High Grade 6061T Aluminum, Electrochemical Anodized for added Corrosion Resistance, Black Textured Finish per Military Standards FED-STD-595

**Panel Mounting**

VESA 100mm

**Overall Dimensions**

See Drawings

**Sunlight Readability**

Sunlight Readable Model Available

**Warranty Period**

3 Years

---

## Environmental

**Sunlight Readability**

Sunlight Readable Model Available

**Operating Temperature Range**

-30°C to 80°C (-22°F to 176°F)

**Storage Temperature**

-30°C to 80°C (-22°F to 176°F)

**Humidity**

5% to 95% RH (non-condensing)

**Shock**

Operating: 30g's, 11ms, ½ Sine

**Vibration**

1g RMS 20-500Hz

**Fasteners**

Vibration-proof, self-locking, fastener system

**EMI**

FCC Class B pursuant to Part 15 of the FCC Rules

**Agency Compliance**

CE

**Altitude**

Operating 0 to 10,000 ft.  
Storage 0 to 40,000 ft.

**RoHS Compliant**

Yes

**Rating**

NEMA 12 / IP52

---

## Additional Add-On Options

**Touch Screen Technology****Resistive****Hardened Armored Touch Technology****Power Type Choices**

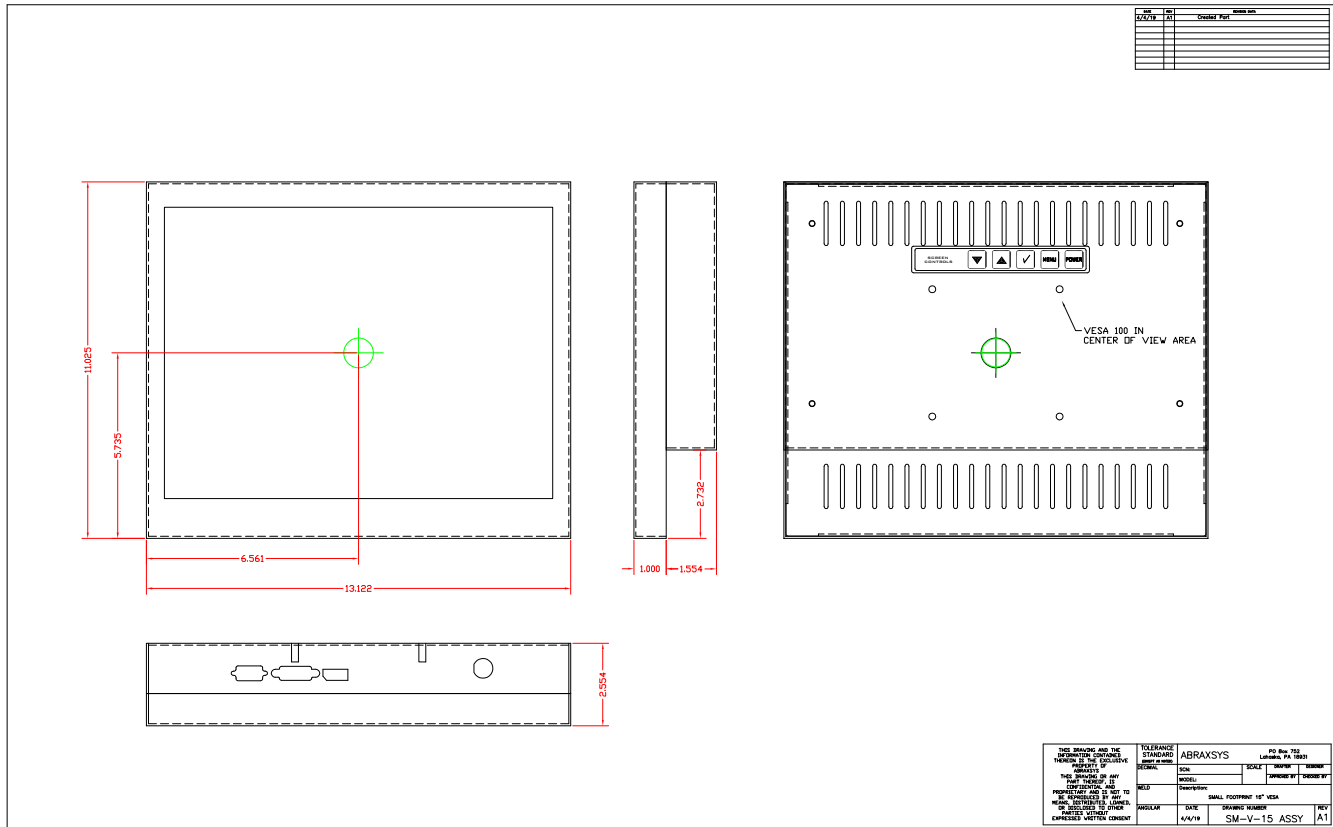
90 VAC to 264 VAC; 12V DC; 24V DC; 9 to 36V DC; or 20 to 53V DC

**Video Input Options**

DVI, HD15 (VGA), DisplayPort, HDMI, Composite, S-Video, SDI, and/or NTSC-PAL

**Custom Video Modes****Extended Operational Temperature Ranges****Conformal Coating of all Internal Circuit Boards****Customization Services****Private Labeling Services**

# Mechanical Drawings



These technical and mechanical resources are subject to change without notice.



**AbraxSys**  
RUGGED LCD SOLUTIONS

(800) 883-9050

info@abraxsyscorp.com

www.abraxsyscorp.com

6161 Keller's Church Road, Units 6151B, 6161A, 6161B, 6171A & 6171B  
Pipersville, Pennsylvania 18947 U.S.A.