



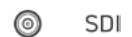
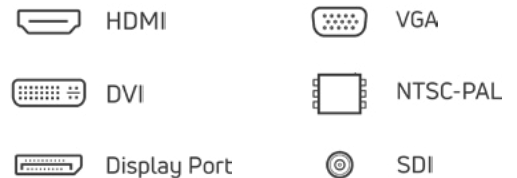
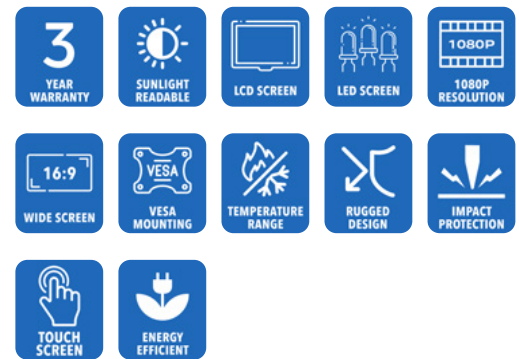
AbraxSys
RUGGED LCD SOLUTIONS

24" Sunlight Readable High-Bright Industrial Grade NEMA 12 (IP50) Rugged Tabletop LCD Monitor

Model SRD-T-240

AbraxSys Daylight Readable Industrial LCD Flat Panel Displays has been designed for industrial applications in the Control field and other users that require a 1080p Hi-Def compatible monitor with a small footprint, ultra-high brightness display (1200 nits) with good viewing angles. The rugged, metal construction of the monitor ensures exceptional stability, especially important when touchscreen operation is necessary.

Model SRD-T-240 LCD monitor is a NEMA 12 (IP50) rated product and utilizes the latest 24" 1080p True Hi-Definition TFT Flat Panels. AbraxSys has added a versatile Analog-Digital interface board, backlight inverter and OSD controls. All elements, including a toughened glass protective screen have been packaged in a compact, rugged metal housing. The result is a flexible Display Head, ready for integration as part of any system; as an analog monitor, or a touchscreen driven human-machine interface.



SDI

Technical Specifications

General

Model
SRD-T-240

Display Size
24.0"

Display Type
Long-Life Industrial Grade Active Matrix TFT LCD

Backlight Technology
Solid State, Long-Life LED, with Light Source Redundancy

Optical Films Enhancements
Boosts efficiency of the backlight's light utilization and minimizes the surface reflection of ambient light. The result is a transmissive enhancement that features higher contrast and a wider range of colors, even in bright outdoor light, than traditional reflective LCDs.

Brightness
1400 nits (cd/m²)

Contrast Ratio
5000:1

Aspect Ratio
16:9, 16:10

Resolution
1920 x 1080 (1080p)

Colors Supported
16 million

Viewing Angles
- 89° / 89° Horizontal
- 89° / 89° Vertical

Video Inputs
DVI, HD15 (VGA), HDMI, DisplayPort, S-Video, SDI, Composite

User Controls
Front Keypad (can also be configured for rear controls, or Manual Full-Range Dimming Turn Pot, Automatic Dimming Sensor, or Remote Dimming)

Protective Window
3mm Sparkle Free Front Protective Impact Window or Projected Capacitive Touch Screen

Power Types
90 VAC to 264 VAC; 12V DC; 24V DC; 9 to 36V DC; or 20 to 53V DC

Physical Attributes

Front Bezel
High Grade 6061T Aluminum, Electrochemical Anodized for added Corrosion Resistance, Black Textured Finish per Military Standards FED-STD-595

Rear Enclosure
High Grade 6061T Aluminum, Electrochemical Anodized for added Corrosion Resistance, Black Textured Finish per Military Standards FED-STD-595

Overall Dimensions
15.29 x 22.94 x 3.29 in
(388.45 x 582.86 x 83.74mm)

Sunlight Readability
The latest optical technology for high ambient light conditions

Warranty Period
3 Years

Environmental

Sunlight Readability
The latest optical technology for high ambient light conditions

Operating Temperature Range
-20°C to 70°C (-4°F to 158°F)

Storage Temperature
-30°C to 80°C (-22°F to 176°F)

Humidity

5% to 95% RH (non-condensing)

Shock

Operating: 30g's, 11ms, ½ Sine

Vibration

1g RMS 20-500Hz

Fasteners

Vibration-proof, self-locking, fastener system

EMI

FCC Class B pursuant to Part 15 of the FCC Rules

Agency Compliance

CE

Altitude

Operating 0 to 10,000 ft.
Storage 0 to 40,000 ft.

RoHS Compliant

Yes

Rating

NEMA 12 / IP50

Additional Add-On Options

Touch Screen Technology

(USB or Serial): Links to the various touch technologies:

Resistive**Projected Capacitive (PCAP) – Multi-Touch****Hardened Armored Touch Technology****Video Input Options**

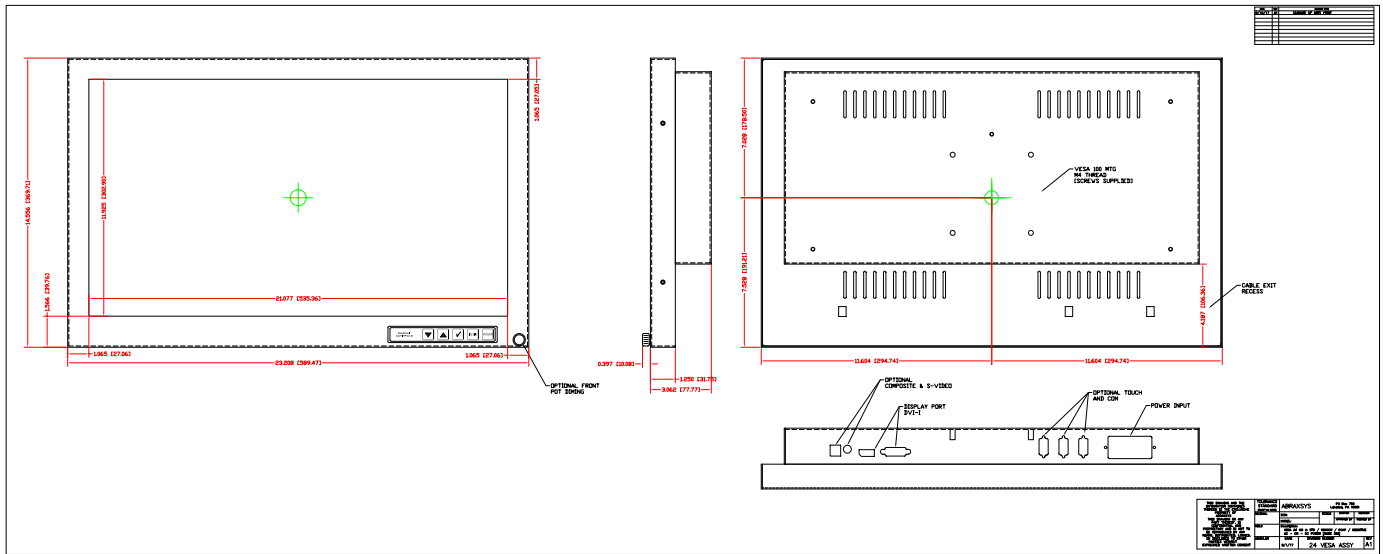
DVI, HD15 (VGA), DisplayPort, HDMI, Composite, S-Video, HD-SDI, and/or NTSC-PAL

Custom Video Modes**Extended Operational Temperature Ranges****Conformal Coating of all Internal Circuit Boards****Customization Services****Dimming Capabilities**

User Keypad (standard); Optional: Manual Full-Range, Automatic Dimming, or Remote Dimming

Private Labeling Services

Mechanical Drawings



These technical and mechanical resources are subject to change without notice.



AbraxSys
RUGGED LCD SOLUTIONS

(800) 883-9050

info@abraxsyscorp.com

www.abraxsyscorp.com

6161 Keller's Church Road, Units 6151B, 6161A, 6161B, 6171A & 6171B
Pipersville, Pennsylvania 18947 U.S.A.