



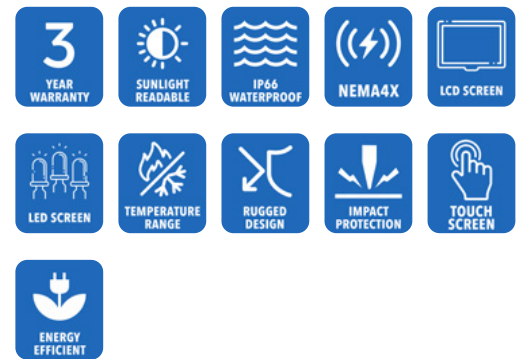
AbraxSys
RUGGED LCD SOLUTIONS

12.1" Industrial Grade Sunlight Readable High Brightness NEMA 4X (IP66) Panel Mount LCD Flat Panel Display

Model SRD-PS-121

AbraxSys Industrial Grade Sunlight Readable High Brightness LCD Flat Panel Displays are ideally suited for various harsh environments where dust, dirt, moisture, splashing water, hose directed spray, and various other caustic contaminants like oil, chemicals, etc.

Model SRD-PS-121 is a Second Generation Sunlight Readable High Brightness model and is a high-quality industrial LCD system offering NEMA 4X (IP66) level protection at the front bezel. The product boasts a 12" display size with 1024 x 768 pixels, 1200 NITS brightness (long-life LED backlight) and Ultra High Contrast Sun Readability 60:1 CR @10,000 Lux. This industrial grade Sunlight Readable NEMA 4X IP66 LCD TFT monitor is designed for use throughout a wide range of harsh outdoor applications. These rugged LCD displays are rigorously tested to ensure compliance with various industry standards and are engineered to withstand the effects of severe environments such as water, dust and dirt intrusion. These products perform well beyond ordinary 'commercial' type monitors. AbraxSys' high bright Sunlight Readable LCDs are ideal for use in any high ambient light condition, and will give you the intensity and brilliance your application requires.



 HDMI

 VGA

 DVI

 Display Port

Technical Specifications

General

Model:
SRD-PS-121

Display Size
12.1"

Display Type
Long-Life Industrial Grade LCD

Backlight Technology
Solid State, Long-Life LED,
with Light Source Redundancy

Optical Films Enhancements
Boosts efficiency of the backlight's light utilization and minimizes the surface reflection of ambient light. The result is a transmissive enhancement that features higher contrast and a wider range of colors, even in bright outdoor light, than traditional reflective LCDs.

Brightness
1200 nits (cd/m²)

Dimming Capabilities
Deep Dimming Down to Black

Contrast Ratio
Ultra High Contrast Sun
Readability 60:1 CR @10, 000 Lux

Aspect Ratio
4:3

Resolution
1024 x 768 (XGA) Native

Colors Supported
16.2M

Viewing Angles
-85° / 85° Horizontal
-85° / 85° Vertical

Video Inputs
DVI, HD15 (VGA), HDMI,
DisplayPort

User Controls
Front Keypad (can also be configured for rear controls, or Manual Full-Range Dimming Turn Pot, Automatic Dimming Sensor, or Remote Dimming)

Protective Window
3mm Sparkle Free Front
Protective Impact Window or
Projected Capacitive Touch Screen

Power Types
90 VAC to 264 VAC; 12V DC; 24V
DC; 9 to 36V DC; or 20 to 53V DC

Physical Attributes

Front Bezel
Stainless Steel

Rear Enclosure
High Grade 6061T Aluminum,
Electrochemical Anodized for
added Corrosion Resistance,
Black Textured Finish per Military
Standards FED-STD-595

Panel Mounting
10-32 Stainless mounting studs,
1/2" exposed thread

Overall Dimensions
13.13 x 11.08 x 1.99 in
(335.50 x 281.43 x 50.75mm)

Cutout
10.5 x 12.5 in
(266.7 x 317.5mm)

Sealability
NEMA 4X (IP66)

Sunlight Readability
The latest optical technology for
high ambient light conditions

Warranty Period
3 Years

Environmental

Sunlight Readability
The latest optical technology for
high ambient light conditions

Operating Temperature Range
-30°C to 80°C (-22°F to 176°F)

Storage Temperature
-30°C to 85°C (-22°F to 185°F)

Humidity

5% to 95% RH (non-condensing)

Shock

Operating: 30g's, 11ms, ½ Sine

Vibration

1g RMS 20-500Hz

Fasteners

Vibration-proof, self-locking, fastener system

EMI

FCC Class B pursuant to Part 15 of the FCC Rules

Agency Compliance

CE

Altitude

Operating 0 to 10,000 ft.
Storage 0 to 40,000 ft.

RoHS Compliant

Yes

Rating

NEMA 4X / IP66

Additional Add-On Options

Touch Screen Technology**Resistive****Hardened Armored Touch Technology****Power Type Choices**

90 VAC to 264 VAC; 12V DC; 24V DC; 9 to 36V DC; or 20 to 53V DC

Video Input Options

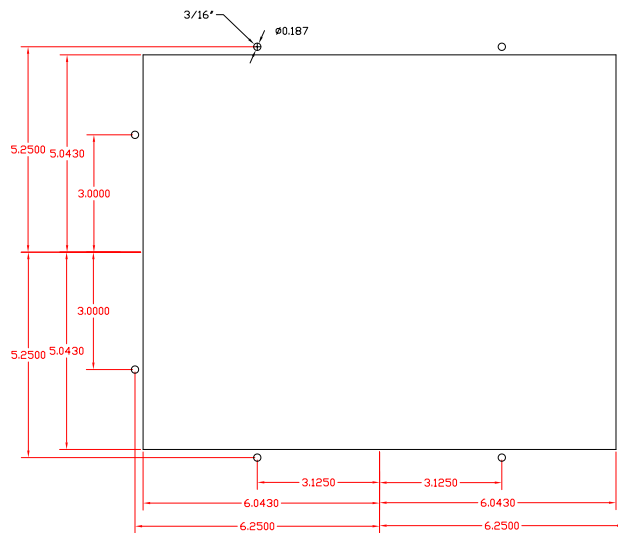
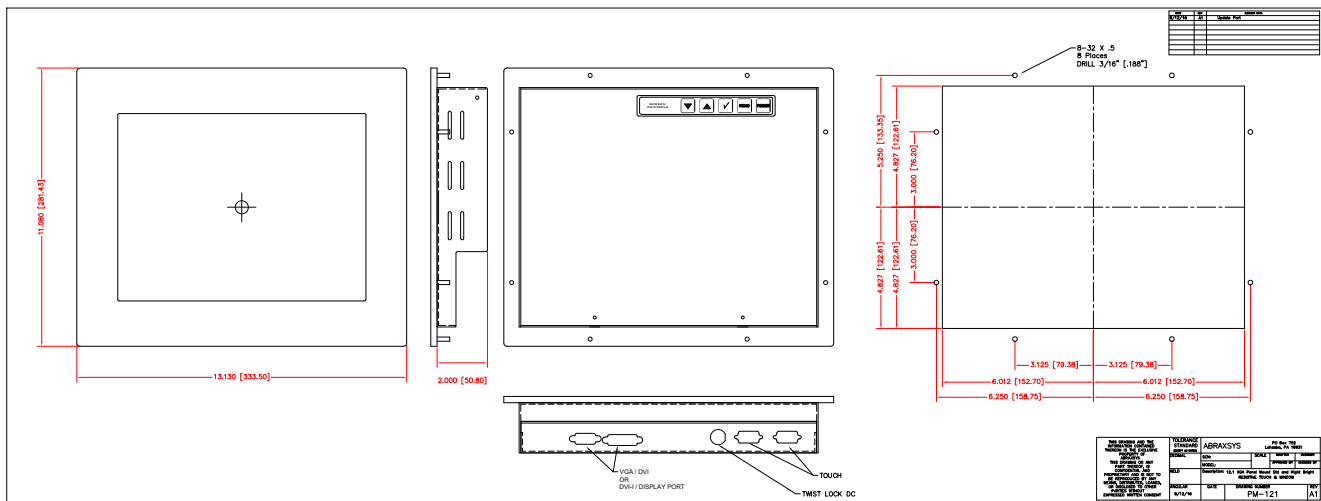
DVI, HD15 (VGA), DisplayPort, and/or HDMI

Custom Video Modes**Extended Operational Temperature Ranges****Private Labeling Services****Customization Services****Dimming Capabilities**

Standard, or Optional Full-Range Manual Turn-Pot, Automatic Dimming Sensor, Remote Dimming

NEMA 4 IP65 Black Powder-Coated Aluminum Front Bezel**Conformal Coating of all Internal Circuit Boards**

Mechanical Drawings



These technical and mechanical resources are subject to change without notice.



AbraxSys
RUGGED LCD SOLUTIONS

(800) 883-9050

info@abraxsyscorp.com

www.abraxsyscorp.com

6161 Keller's Church Road, Units 6151B, 6161A, 6161B, 6171A & 6171B
Pipersville, Pennsylvania 18947 U.S.A.