



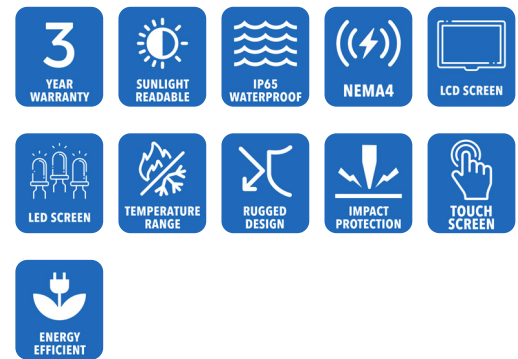
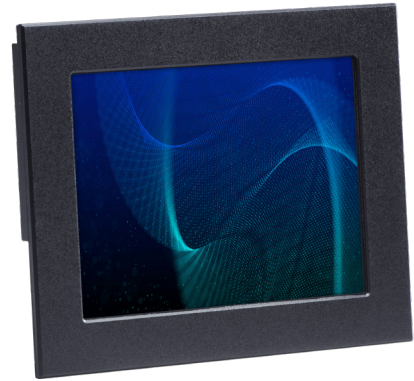
AbraxSys
RUGGED LCD SOLUTIONS

8.4" Industrial Grade Sunlight Readable High Brightness NEMA 4 (IP65) Panel Mount LCD Flat Panel Display

Model SRD-PM-084

Model SRD-PM-104 is a Second Generation Sunlight Readable High Brightness model and is a high-quality industrial LCD system offering NEMA 4 (IP65) level protection at the front bezel. The product boasts a 8.4" display size with 1024 x 768 pixels, 1300 nits brightness (long-life LED backlight) and 700:1 contrast ratio.

This industrial grade Sunlight Readable NEMA 4 IP65 LCD TFT monitor is designed for use throughout a wide range of harsh outdoor applications. These rugged LCD displays are rigorously tested to ensure compliance with various industry standards and are engineered to withstand the effects of severe environments such as water, dust and dirt intrusion. These products perform well beyond ordinary 'commercial' type monitors. AbraxSys' high bright Sunlight Readable LCDs are ideal for use in any high ambient light condition, and will give you the intensity and brilliance your application requires.



HDMI



VGA



DVI



Display Port

Technical Specifications

General

Model

SRD-PM-084

Display Size

8.4"

Display Type

Long-Life Industrial Grade Active Matrix TFT LCD

Backlight Technology

Solid State, Long-Life LED

Optical Films Enhancements

Boosts efficiency of the backlight's light utilization and minimizes the surface reflection of ambient light. The result is a transmissive enhancement that features higher contrast and a wider range of colors, even in bright outdoor light, than traditional reflective LCDs.

Brightness

1200 nits (cd/m²)

Dimming Capabilities

Deep Dimming Down to Black

Contrast Ratio

750:1

Aspect Ratio

4:3

Resolution

800 x 600

Colors Supported

16.7M (8-bit/color)

Viewing Angles

-85° to 85° Horizontal

-85° to 85° Vertical

Video Inputs

DVI, HD15 (VGA), HDMI, DisplayPort

User Controls

Front Keypad (can also be configured for rear controls, or Manual Full-Range Dimming Turn Pot, Automatic Dimming Sensor, or Remote Dimming), Deep Dimming Down to Black

Optical Bonding

Optional Optical Bonding of Front Protective Glass or Touch Screen Window

Protective Window

3mm Hardened Protective Window, for more information [CLICK HERE](#) (also available various optional Touch Screen Technologies)

Power Types

90 VAC to 264 VAC; 12V DC; 24V DC; 9 to 36V DC; or 20 to 53V DC

Physical Attributes

Front Bezel

High Grade 6061T Aluminum, Electrochemical Anodized for added Corrosion Resistance, Black Textured Finish per Military Standards FED-STD-595

Rear Enclosure

High Grade 6061T Aluminum, Electrochemical Anodized for added Corrosion Resistance, Black Textured Finish per Military Standards FED-STD-595

Panel Mounting

10-32 Stainless mounting studs, 1/2" exposed thread

Overall Dimensions

8.939 x 10.624 x 2.070 in

Cutout

9.28 x 7.78 in (235.8 x 197.7mm)

Weight

8 lbs

Sealability

NEMA 4 (IP65)

Sunlight Readability

The latest optical technology for high ambient light conditions

Warranty Period

3 Years

Environmental

Sunlight Readability

The latest optical technology for high ambient light conditions

Operating Temperature Range

-30°C to 80°C (-22°F to 176°F)

Storage Temperature

-30°C to 70°C (-22°F to 158°F)

Humidity

5% to 95% RH (non-condensing)

Shock

Operating: 30g's, 11ms, ½ Sine

Vibration

1g RMS 20-500Hz

Fasteners

Vibration-proof, self-locking, fastener system

EMI

FCC Class B pursuant to Part 15 of the FCC Rules

Agency Compliance

CE

Altitude

Operating 0 to 10,000 ft.
Storage 0 to 40,000 ft.

RoHS Compliant

Yes

Rating

NEMA 4 / IP65

Additional Add-On Options

Touch Screen Technology

Resistive

Multi-Touch 2-Point Resistive

Hardened Armored Touch Technology

Video Input Options

DVI, HD15 (VGA), DisplayPort, and/or HDMI

Custom Video Modes

Extended Operational Temperature Ranges

Conformal Coating of all Internal Circuit Boards

Private Labeling Services

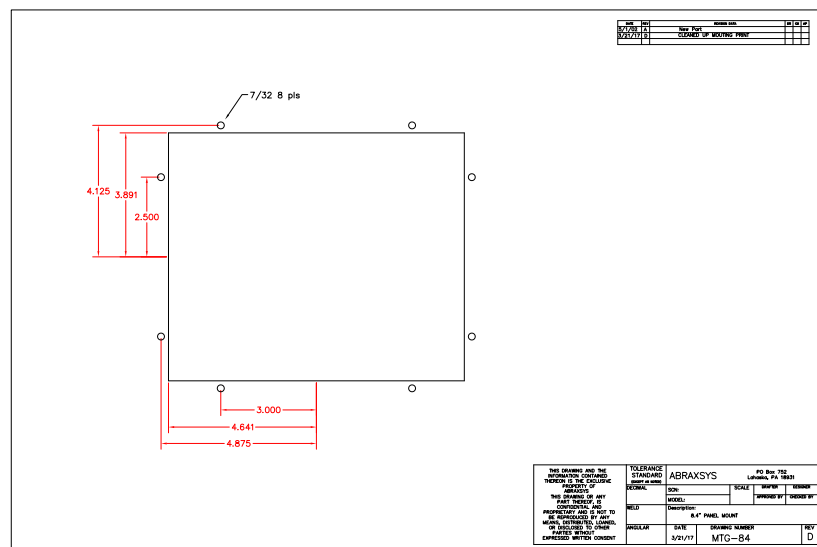
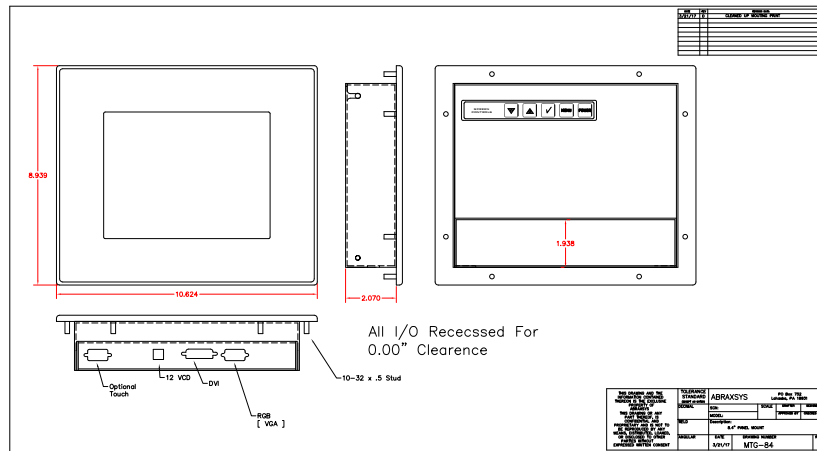
Customization Services

Dimming Capabilities

User Keypad (standard); Optional: Manual Full-Range, Automatic Dimming, or Remote Dimming

NEMA 4X (IP66) Stainless Steel Front Bezel

Mechanical Drawings



These technical and mechanical resources are subject to change without notice.



AbraxSys
RUGGED LCD SOLUTIONS

(800) 883-9050

info@abraxsyscorp.com

www.abraxsyscorp.com

6161 Keller's Church Road, Units 6151B, 6161A, 6161B, 6171A & 6171B
Pipersville, Pennsylvania 18947 U.S.A.