

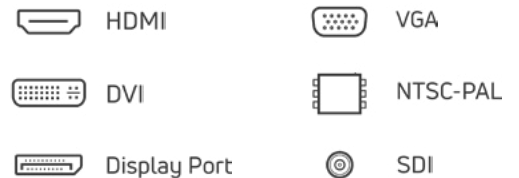
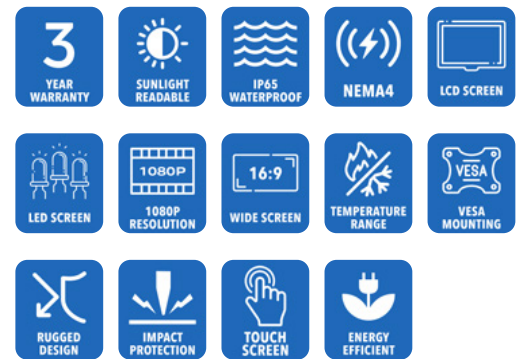


13.3" Ultra-Rugged Sunlight Readable IP65/ IP66 (NEMA 4/4X) Fully-Sealed VESA Mount FHD 1080P LCD Monitor

Model SRD-FVM-133

Model SRD-FVM-133 LCD monitor is an Ultra-Rugged Sunlight Readable 1500 nit High Brightness NEMA 4/4X (IP65/IP66) rated product and utilizes the latest 13.3" TFT Flat Panels Full-High Definition 1920 x 1080. The enclosure is constructed of milled 6061 Grade Aluminum which has been Zinc-Chromate Dipped then treated with Corrosion Resistant Thermoset UV-stable Black Powder-Coating. AbraxSys has added a versatile Analog-Digital interface board, backlight inverter and OSD controls. All elements, including a toughened glass protective screen have been packaged in a compact, rugged metal housing. The result is a flexible Display Head, ready for integration as part of any system; as an analog monitor, or a touchscreen driven human-machine interface.

This rugged model offers exceptional shock and vibration safeguards and its housing is constructed of high grade aluminum which has been dipped in zinc-chromate and then finished with a resilient corrosive resistant thermal-set black powder-coating. This product is very ruggedly built, features long-life displays with no scheduled End Of Life. Incorporating the latest LCD and control electronics you are assured a display the will perform reliably in harsh industrial environments. Many configurations available.



Technical Specifications

General

Model:

SRD-FVM-133

Display Size

13.3"

Display Type

Long-Life Industrial Grade Active Matrix TFT LCD

Backlight Technology

Solid State, Long-Life LED

Optical Films Enhancements

Boosts efficiency of the backlight's light utilization and minimizes the surface reflection of ambient light. The result is a transmissive enhancement that features higher contrast and a wider range of colors, even in bright outdoor light, than traditional reflective LCDs.

Brightness

400 nits (cd/m²)

Dimming Capabilities

Deep Dimming Down to Black

Contrast Ratio

800:1

Aspect Ratio

16:9

Resolution

1920 x 1080 (1080p)
– True High-Definition

Colors Supported

16.7M (8-bit/color)

Viewing Angles

- 89° / 89° vertical

Video Inputs

DVI, HD15 (VGA), HDMI, DisplayPort, S-Video, SDI, Composite

User Controls

Multi-Functional User Keypad

Optical Bonding

Optional Optical Bonding of Front Protective Glass or Touch Screen Window

Protective Window

3mm Hardened Protective Window, for more information [CLICK HERE](#)
(also available various optional Touch Screen Technologies)

Power Types

90 VAC to 264 VAC; 12V DC; 24V DC; 9 to 36V DC; or 20 to 53V DC

Physical Attributes

Front Bezel

High Grade 6061T Aluminum, Electrochemical Anodized for added Corrosion Resistance, Black Textured Finish per Military Standards FED-STD-595

Rear Enclosure

High Grade 6061T Aluminum, Electrochemical Anodized for added Corrosion Resistance, Black Textured Finish per Military Standards FED-STD-595

Panel Mounting

VESA 100mm

Overall Dimensions

See Drawings

Cutout

See Drawings

Weight

See Drawings

Sealability

Fully Sealed

Sunlight Readability

The latest optical technology for high ambient light conditions

Warranty Period

3 Years

Environmental

Sunlight Readability

The latest optical technology for high ambient light conditions

Operating Temperature Range

-30°C to 70°C (-22°F to 158°F)

Storage Temperature

-30°C to 70°C (-22°F to 158°F)

Humidity

5% to 95% RH (non-condensing)

Shock

Operating: 30g's, 11ms, ½ Sine

Vibration

1g RMS 20-500Hz

Fasteners

Vibration-proof, self-locking, fastener system

EMI

FCC Class B pursuant to Part 15 of the FCC Rules

Agency Compliance

CE

Altitude

Operating 0 to 10,000 ft.
Storage 0 to 40,000 ft.

RoHS Compliant

Yes

Rating

NEMA 12 / IP52

Additional Add-On Options

Touch Screen Technology

(USB or Serial): Links to the various touch technologies:

Resistive**Multi-Touch Up to 10-Point PCAP****Hardened Armored Touch Technology****Video Input Options**

DVI, HD15 (VGA), DisplayPort, HDMI, Composite, S-Video, HD-SDI, and/or NTSC-PAL

Dimming Capabilities

User Keypad (standard); Optional: Manual Full-Range, Automatic Dimming, or Remote Dimming

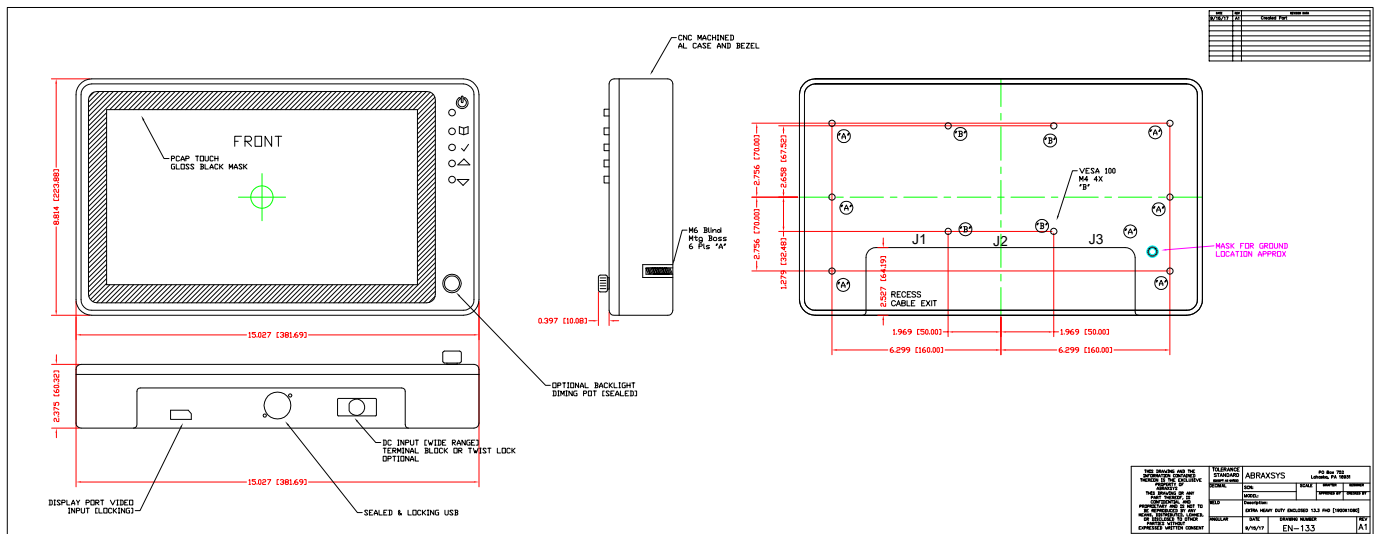
Custom Video Modes**Power Type Choices**

90 VAC to 264 VAC; 12V DC; 24V DC; 9 to 36V DC; or 20 to 53V DC

Extended Operational**Temperature Ranges****Conformal Coating of all Internal Circuit Boards****Private Labeling Services****Customization Services****Optical Bonding**

Various Mounts, Brackets or Arms including **RAM Mounts**

Mechanical Drawings



These technical and mechanical resources are subject to change without notice.



AbraxSys
RUGGED LCD SOLUTIONS

(800) 883-9050

info@abraxsyscorp.com

www.abraxsyscorp.com

6161 Keller's Church Road, Units 6151B, 6161A, 6161B, 6171A & 6171B
Pipersville, Pennsylvania 18947 U.S.A.