



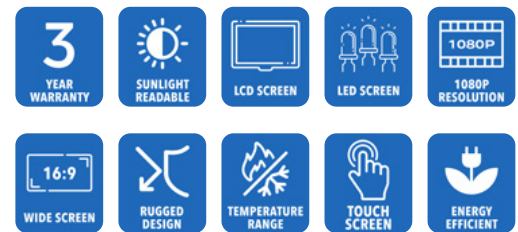
**AbraxSys**  
RUGGED LCD SOLUTIONS

# 21.5" Sunlight Readable Industrial Grade Open Frame Chassis Mount LCD Flat Panel Display

**Model SRD-CM-215**

AbraxSys Daylight Readable Industrial LCD Flat Panel Displays has been designed for industrial applications in the Control field and other users that require a 1920 x 1080 (1080P) compatible monitor with a small footprint, ultra-high brightness display (1200 nits) with good viewing angles. The rugged, metal construction of the monitor ensures exceptional stability, especially important when touchscreen operation is necessary.

Model SRD-CM-215 LCD monitor is an open-frame, chassis mount design and utilizes the latest 21.5" 1920 x 1080 (1080P) High-Def WIDE TFT Flat Panel. AbraxSys has added a versatile Analog-Digital interface board, backlight inverter and OSD controls. All elements, including a toughened glass protective screen have been packaged in a compact, rugged, lightweight aluminum chassis. The result is a flexible Display Head, ready for integration as part of any system; as an analog monitor, or a touchscreen driven human-machine interface.



# Technical Specifications

---

## General

**Model**  
SRD-CM-215

**Display Size**  
21.5"

**Display Type**  
Long-Life Industrial Grade LCD

**Backlight Technology**  
Long-Life Industrial Grade Active Matrix TFT LCD

**Optical Films Enhancements**  
Boosts efficiency of the backlight's light utilization and minimizes the surface reflection of ambient light. The result is a transmissive enhancement that features higher contrast and a wider range of colors, even in bright outdoor light, than traditional reflective LCDs.

**Brightness**  
1200 nits (cd/m<sup>2</sup>)

**Dimming Capabilities**  
User Keypad (standard); Optional: Manual Full-Range, Automatic Dimming, or Remote Dimming

**Contrast Ratio**  
4300:1

**Aspect Ratio**  
16:9

**Resolution**  
1920 x 1080 (1080p)  
True High-Definition

**Colors Supported**  
16.7M (8-bit/color)

**Viewing Angles**  
-89° / 89° Horizontal  
-89° / 89° Vertical

**Video Inputs**  
DVI, HD15 (VGA), HDMI, DisplayPort, S-Video, SDI, Composite

**User Controls**  
User Keypad (standard); Optional: Manual Full-Range, Automatic Dimming, or Remote Dimming

**Optical Bonding**  
[Optical Bonding](#)

**Protective Window**  
3mm Hardened Protective Window, for more information [CLICK HERE](#) – (also available various optional Touch Screen Technologies)

**Power Types**  
90 VAC to 264 VAC; 12V DC; 24V DC; 9 to 36V DC; or 20 to 53V DC

---

## Physical Attributes

**Rear Enclosure**  
High Grade Aluminum, Electrochemical Anodized for added Corrosion Resistance

**Overall Dimensions**  
See Drawings

**Weight**  
See Drawings

**Sunlight Readability**  
The latest optical technology for high ambient light conditions

**Warranty Period**  
3 Years

---

## Environmental

**Sunlight Readability**  
The latest optical technology for high ambient light conditions

**Operating Temperature Range**  
-20°C to +70°C (158°F)

**Storage Temperature**  
-20°C to +70°C (158°F)

**Humidity**  
5% to 95% RH (non-condensing)

**Shock**  
Operating: 30g's, 11ms, ½ Sine

**Vibration**  
1g RMS 20-500Hz

**EMI**

FCC Class B pursuant to Part 15 of the FCC Rules

**Agency Compliance**

CE

**Altitude**

Operating 0 to 10,000 ft.  
Storage 0 to 40,000 ft.

**RoHS Compliant**

Yes

---

## Additional Add-On Options

**Touch Screen Technology****NEMA 4 – IP65**

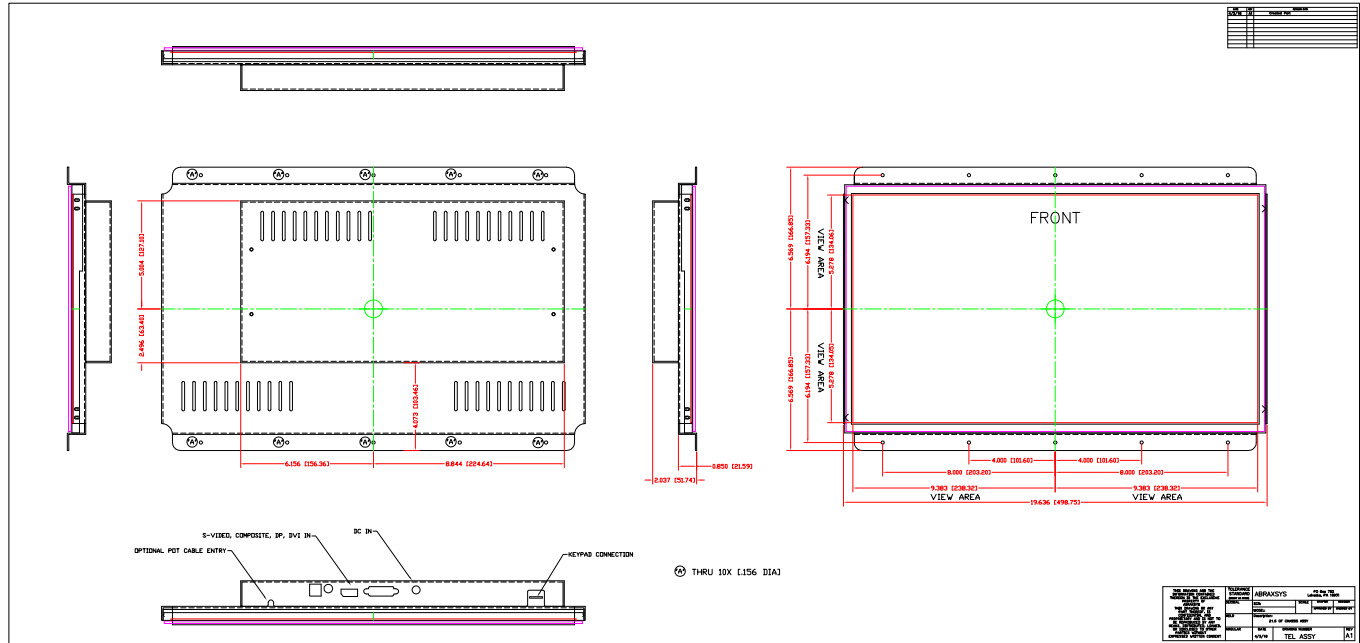
(USB or Serial): Links to the various touch technologies

**Resistive****Hardened Armored Touch Technology****Custom Video Modes****Extended Operational Temperature Ranges****Conformal Coating of all Internal Circuit Boards****Private Labeling Services****Customization Services****Dimming Capabilities**

User Keypad (standard); Optional: Manual Full-Range (on wire lead), Automatic Dimming, or Remote Dimming

**Optical Bonding**

# Mechanical Drawings



These technical and mechanical resources are subject to change without notice.



**AbraxSys**  
RUGGED LCD SOLUTIONS

(800) 883-9050

info@abraxsyscorp.com

www.abraxsyscorp.com

6161 Keller's Church Road, Units 6151B, 6161A, 6161B, 6171A & 6171B  
Pipersville, Pennsylvania 18947 U.S.A.