



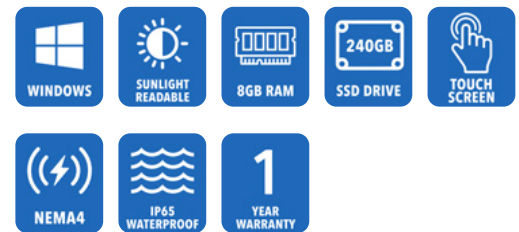
AbraxSys
RUGGED LCD SOLUTIONS

17" Sunlight Readable Industrial Grade IP65 (NEMA 4) Touch Screen LCD Flat Panel Computer

Model SPC2-PM-170

This series of rugged sunlight readable panel PCs is the ultimate solution for outdoor embedded computing and are ideally suited for high ambient light environments where dust, dirt, moisture, splashing water, hose directed spray, and various other caustic contaminants like oil, chemicals, etc. are commonplace. This advanced series features Standard: Intel 11th Generation Core I5-1145GRE (8M Cache, up to 4.10 GHz), 240GB Solid-State Drive (higher capacity available), 8GB memory (expandable to 32GB), a vast array of I/O and Ethernet ports, Intel's Skylake graphics chipset, solid-state long-life LED backlighting, solid-state storage devices, and exceptional temperature ranges: Operating Temperature: -20°C to 60°C (-4°F to 140°F), Storage Temperature: -40°C ~ 75°C (-40°F ~ 167°F).

As well, a multitude of add-on features are available to meet our customer's specific requirements.



Technical Specifications

General

Model

SPC2-PM-170

Display Size

17.0"

Display Type

Long-Life Industrial Grade Active Matrix TFT LCD

Backlight Technology

Solid State, Long-Life LED, with Light Source Redundancy

Optical Films Enhancements

Boosts efficiency of the backlight's light utilization and minimizes the surface reflection of ambient light. The result is a transmissive enhancement that features higher contrast and a wider range of colors, even in bright outdoor light, than traditional reflective LCDs.

Brightness

1200 nits (cd/m²)

Dimming Capabilities

Optional Full-Range Manual Turn-Pot, Automatic Dimming Sensor, Remote Dimming, Standard

Contrast Ratio

1000:1

Aspect Ratio

5:4

Resolution

1280 x 1024 (SXGA) Native

Colors Supported

16 million

Viewing Angles

-80° / 80° Horizontal
-70° / 70° Vertical

User Controls

Front Keypad (can also be configured for rear controls, or Manual Full-Range Dimming Turn Pot, Automatic Dimming Sensor, or Remote Dimming)

Optical Bonding

Optical Bonding

Power Types

90 VAC to 264 VAC; 12V DC; 24V DC; 9 to 36V DC; or 20 to 53V DC

Physical Attributes

Front Bezel

High Grade 6061T Aluminum, Electrochemical Anodized for added Corrosion Resistance, Black Textured Finish per Military Standards FED-STD-595

Rear Enclosure

High Grade 6061T Aluminum, Electrochemical Anodized for added Corrosion Resistance, Black Textured Finish per Military Standards FED-STD-595

Panel Mounting

10-32 Stainless Mounting Studs, 1/2" Exposed Thread

Overall Dimensions

See Drawings

Cutout

13.56 x 16.56 in
(344.4 x 420.6 mm)

Weight

18 lbs. (8.1 Kg)

Sealability

NEMA 4 (IP65)

Sunlight Readability

The latest optical technology for high ambient light conditions

Warranty Period

1 Year

Environmental

Sunlight Readability

The latest optical technology for high ambient light conditions

Operating Temperature Range

-20°C to 60°C (-4°F to 140°F)

Storage Temperature

-40°C ~ 75°C (-40°F ~ 167°F)

Humidity

5% to 95% RH (non-condensing)

Shock

Operating: 30g's, 11ms, ½ Sine

Vibration

1g RMS 20-500Hz

Fasteners

Vibration-proof, self-locking, fastener system

EMI

FCC Class B pursuant to Part 15 of the FCC Rules

Agency Compliance

CE

Altitude

Operating 0 to 10,000 ft.
Storage 0 to 40,000 ft.

RoHS Compliant

Yes

Rating

NEMA 4 / IP65

Additional Add-On Options

Touch Screen Technology**Resistive****Multi-Touch Up to 10-Point PCAP****Hardened Armored Touch Technology****Extended Operational Temperature Ranges****Power Type Choices**

90 VAC to 264 VAC; 12V DC; 24V DC; 9 to 36V DC; or 20 to 53V DC

Conformal Coating of all Internal Circuit Boards**Private Labeling Services****Customization Services****Dimming Capabilities**

Standard, or Optional Full-Range Manual Turn-Pot, Automatic Dimming Sensor, Remote Dimming

Optional O/S

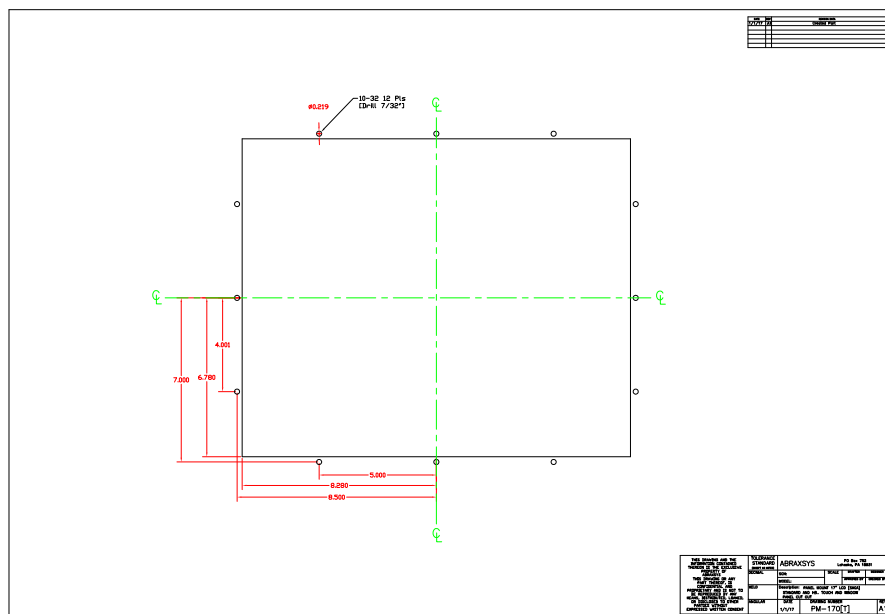
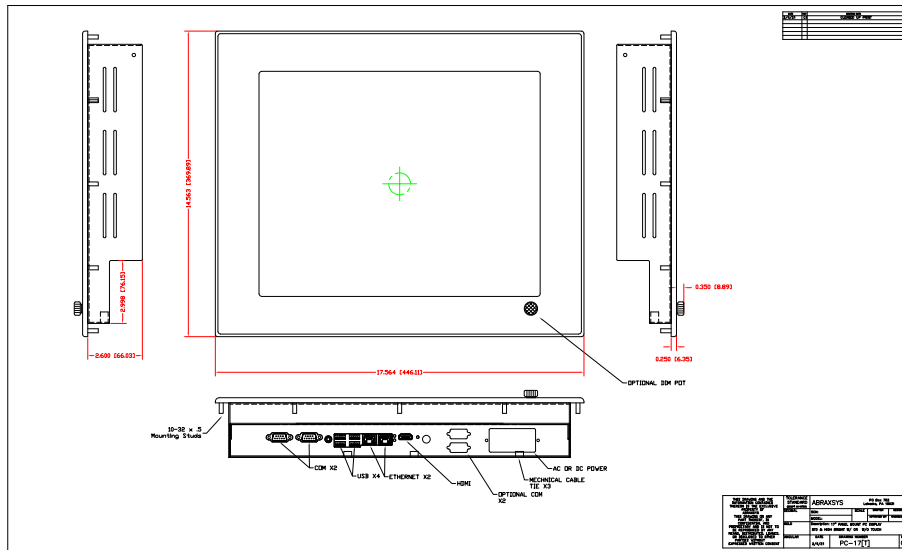
Windows 10 PRO or 11 PRO

Larger Storage Devices

NEMA 4X IP66 Stainless Steel Front Bezel

Wi-Fi (wireless networking technology)

Mechanical Drawings



These technical and mechanical resources are subject to change without notice.



AbraxSys
RUGGED LCD SOLUTIONS

(800) 883-9050

info@abraxsyscorp.com

www.abraxsyscorp.com

6161 Keller's Church Road, Units 6151B, 6161A, 6161B, 6171A & 6171B
Pipersville, Pennsylvania 18947 U.S.A.