



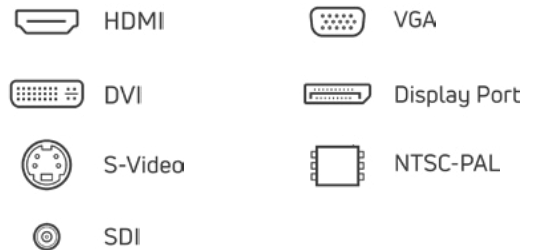
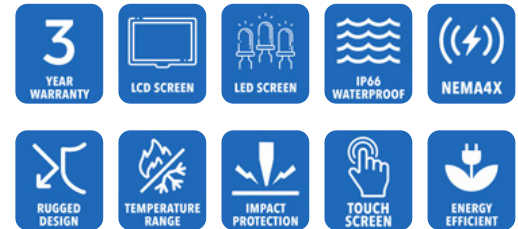
# 17" Industrial Waterproof NEMA 4X (IP66) Panel Mount LCD

## Model PS-170

AbraxSys Industrial Waterproof LCD Flat Panel Displays are ideally suited for various harsh environments where dust, dirt, moisture, splashing water, hose directed spray, and various other caustic contaminants like oil, chemicals, etc.

Model PS-170 is a high-quality industrial LCD system offering NEMA 4X (IP66) level protection at the front bezel. The product boasts a 17" display size with 1280 x 1024 pixels, 350 NITS brightness (long-life LED backlights) and 1000:1 contrast ratio.

The unit is constructed with a stainless steel gasket-sealed front bezel with "bolt" mounting and its rear housing is constructed of high-quality metal which has been dipped in zinc-chromate and then finished with a resilient corrosive resistant thermal-set black powder-coating. This product is very ruggedly built, features long-life displays with no scheduled End Of Life. Incorporating the latest LCD, energy efficient LED backlighting, and advanced control electronics, you are assured a display that will perform reliably in harsh industrial environments and work in a continuous mode for many, many years. Many optional configurations are available, including our Sunlight Readable Display models.



# Technical Specifications

---

## General

**Model:**  
PS-170

**Display Size**  
17.0"

**Display Type**  
Long-Life Industrial Grade LCD

**Backlight Technology**  
Solid State, Long-Life LED –  
[CLICK HERE](#) for more information

**Brightness**  
350 nits (cd/m<sup>2</sup>)

**Dimming Capabilities**  
Rear Keypad

**Contrast Ratio**  
1000:1

**Aspect Ratio**  
5:4

**Resolution**  
1280 x 1024 (SXGA) Native

**Colors Supported**  
16.7M (8-bit/color)

**Viewing Angles**  
-80° / 80° Horizontal  
-85° / 85° Vertical

**Video Inputs**  
DVI, HD15 (VGA), HDMI,  
DisplayPort, S-Video, SDI,  
Composite

**User Controls**  
Rear Keypad

**Optical Bonding**  
[Optical Bonding](#)

**Protective Window**  
3mm Hardened Protective  
Window, for more information  
[CLICK HERE](#) – (also available  
various optional Touch Screen  
Technologies)

**Power Types**  
90 VAC to 264 VAC; 12V DC; 24V  
DC; 9 to 36V DC; or 20 to 53V DC

---

## Physical Attributes

**Front Bezel**  
Gasket-Sealed Stainless Steel

**Rear Enclosure**  
High Grade 6061T Aluminum,  
Electrochemical Anodized for  
added Corrosion Resistance,  
Black Textured Finish per Military  
Standards FED-STD-595

**Panel Mounting**  
10-32 Stainless Mounting Studs,  
1/2" Exposed Thread

**Overall Dimensions**  
15.88 x 13.34 x 2.08 in  
(403.4 x 338.8 x 52.8 mm)

**Cutout**  
13.56 x 16.56 in  
(344.4 x 420.mm)

**Weight**  
18 lbs. (8.1 Kg)

**Sealability**  
Gasket-Sealed

**Sunlight Readability**  
Sunlight Readable  
Model Available

**Warranty Period**  
3 Years

---

## Environmental

**Sunlight Readability**  
Sunlight Readable Model Available

**Operating Temperature Range**  
-30°C to 70°C (-22°F to 158°F),  
Extended Operational Temperature  
Ranges Available

**Storage Temperature**  
-30°C to 85°C (-22°F to 185°F)

**Humidity**

5% to 95% RH (non-condensing)

**Shock**

Operating: 30g's, 11ms, ½ Sine

**Vibration**

1g RMS 20-500Hz

**EMI**

FCC Class B pursuant to Part 15 of the FCC Rules

**Agency Compliance**

CE

**Altitude**

Operating 0 to 10,000 ft.  
Storage 0 to 40,000 ft.

**RoHS Compliant**

Yes

**Rating**

NEMA 4X / IP66

---

## Additional Add-On Options

**Touch Screen Technology****Resistive****Hardened Armored Touch Technology****Video Input Options**

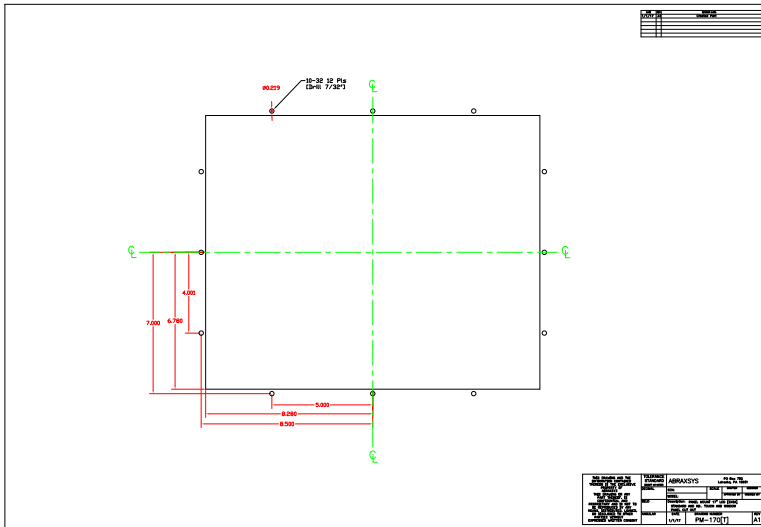
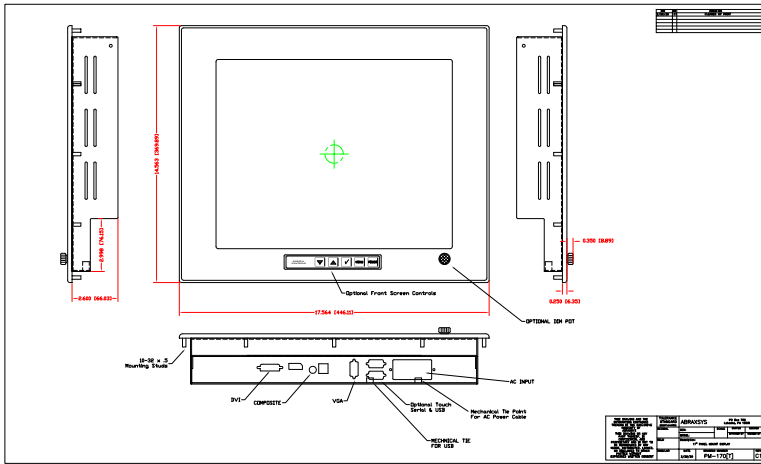
DVI, HD15 (VGA), DisplayPort, HDMI, Composite, S-Video, SDI, and/or NTSC-PAL

**Custom Video Modes****Extended Operational Temperature Ranges****Conformal Coating of all Internal Circuit Boards****Private Labeling Services****Customization Services**

NEMA 4 IP65 Black Powder-Coated Aluminum Front Bezel

**Sunlight Readable Model Available**

# Mechanical Drawings



These technical and mechanical resources are subject to change without notice.



**AbraxSys**  
RUGGED LCD SOLUTIONS

(800) 883-9050

info@abraxsyscorp.com

www.abraxsyscorp.com

6161 Keller's Church Road, Units 6151B, 6161A, 6161B, 6171A & 6171B  
Pipersville, Pennsylvania 18947 U.S.A.