

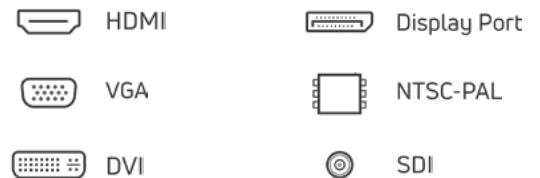
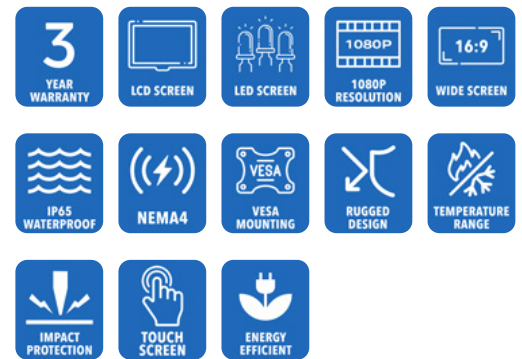


13.3" Ultra-Rugged Sunlight Readable IP65/ IP66 (NEMA 4/4X) Fully-Sealed VESA Mount FHD 1080P LCD Monitor

Model FVM-133

Model FVM-133 LCD monitor is a Ultra-Rugged NEMA 4/4X (IP65/ IP66) rated product and utilizes the latest 13.3" TFT Flat Panels Full-High Definition 1920 x 1080. The enclosure is constructed of milled 6061 Grade Aluminum which has been Zinc-Chromate Dipped then treated with Corrosion Resistant Thermoset UV-stable Black Powder-Coating. AbraxSys has added a versatile Analog-Digital interface board, backlight inverter and OSD controls. All elements, including a toughened glass protective screen have been packaged in a compact, rugged metal housing. The result is a flexible Display Head, ready for integration as part of any system; as an analog monitor, or a touchscreen driven human-machine interface.

This rugged model offers exceptional shock and vibration safeguards and its housing is constructed of high grade aluminum which has been dipped in zinc-chromate and then finished with a resilient corrosive resistant thermal-set black powder-coating. This product is very ruggedly built, features long-life displays with no scheduled End Of Life. Incorporating the latest LCD and control electronics you are assured a display the will perform reliably in harsh industrial environments. Many configurations available



Technical Specifications

General

Model:
FVM-133

Display Size
13.3"

Display Type
Long-Life Industrial Grade LCD

Backlight Technology
Solid State, Long-Life LED –
[CLICK HERE](#) for more information

Brightness
400 nits (cd/m2)

Dimming Capabilities
Deep Dimming Down to Black

Contrast Ratio
800:1

Aspect Ratio
16:9

Resolution
1920 x 1080 (1080p)

Colors Supported
16.7M (8-bit/color)

Viewing Angles
- 89° / 89° vertical
- 89° / 89° horizontal

Video Inputs
DVI, HD15 (VGA), DisplayPort,
Composite, S-Video, HD-SDI, HDMI

User Controls
Multi-Functional User Keypad

Optical Bonding
Optional Optical Bonding of Front
Protective Glass or Touch Screen
Window (for more information
about its benefits [CLICK HERE](#))

Protective Window
3mm Hardened Protective
Window, for more information
[CLICK HERE](#) – (also available
various optional Touch Screen
Technologies)

Power Types
90 VAC to 264 VAC, 12V DC, 24V
DC, 9 to 36V DC, 20 to 53V DC

Physical Attributes

Front Bezel
High Grade 6061T Aluminum,
Electrochemical Anodized for
added Corrosion Resistance,
Black Textured Finish per Military
Standards FED-STD-595

Rear Enclosure
High Grade 6061T Aluminum,
Electrochemical Anodized for
added Corrosion Resistance,
Black Textured Finish per Military
Standards FED-STD-595

Panel Mounting
VESA 100mm

Overall Dimensions
See Drawings

Cutout
See Drawings

Sealability
NEMA 4 (IP65), NEMA 4X (IP66)

Sunlight Readability
Sunlight Readable Model Available

Warranty Period
3 Years

Environmental

Sunlight Readability
Sunlight Readable Model Available

Operating Temperature Range
-30°C to 70°C (-22°F to 158°F)

Storage Temperature
-30°C to 70°C (-22°F to 158°F)

Humidity

5% to 95% RH (non-condensing)

Shock

Operating: 30g's, 11ms, ½ Sine,
Non-Operating: 200G, 2ms, half
sine wave, 1 time for ± X, ± Y, ± Z.

Vibration

Operating: 1g RMS 20-500Hz,
Non-Operating: 1.5G, 10 ~ 300 Hz,
10min/cycle, 3 cycles each X, Y, Z

Fasteners

Vibration-proof, self-locking,
fastener system which will not
loosen regardless of seat torque.
Designed to help make products
safer, lower warranty costs
and prolong equipment life by
eliminating vibration; increased
safety, reliability, operating life
and reduced maintenance.

EMI

FCC Class B pursuant to Part 15
of the FCC Rules

Agency Compliance

CE

Altitude

Operating 0 to 10,000 ft.
Storage 0 to 40,000 ft.

RoHS Compliant

Yes

Rating

NEMA 12 / IP52

Additional Add-On Options

Touch Screen Technology**Resistive****Multi-Touch Up to 10-Point PCAP****Hardened Armored Touch
Technology****Video Input Options**

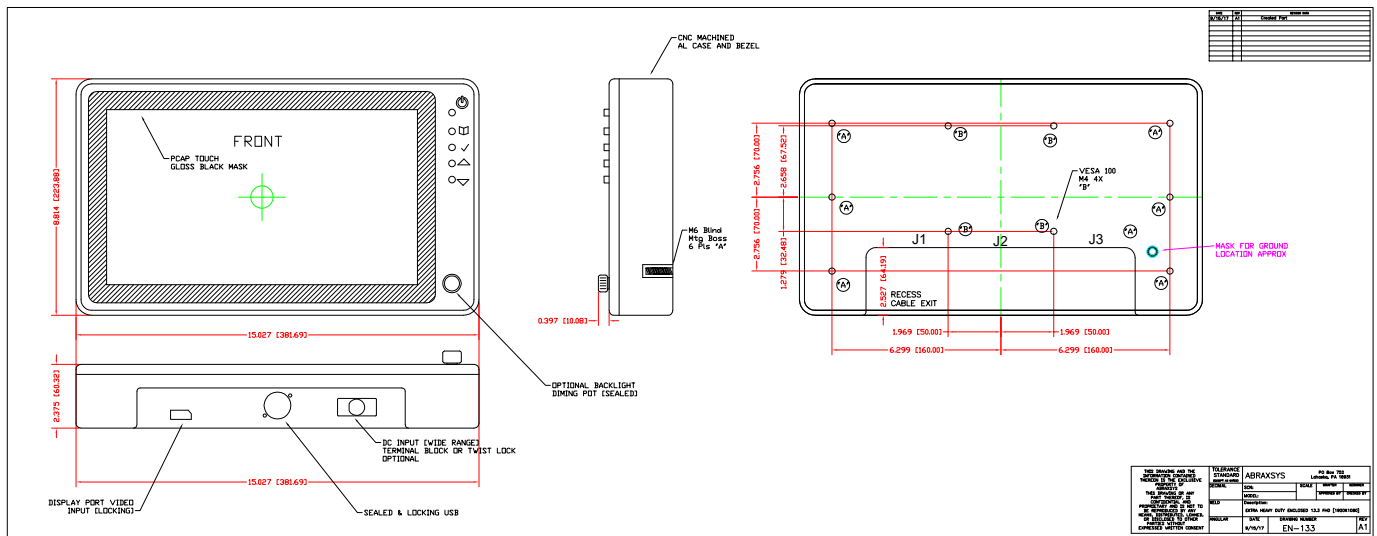
DVI, HD15 (VGA), DisplayPort,
HDMI, Composite, S-Video, HD-
SDI, and/or NTSC-PAL

Custom Video Modes**Extended Operational
Temperature Ranges****Conformal Coating of all
Internal Circuit Boards****Power Type Choices**

90 VAC to 264 VAC; 12V DC; 24V
DC; 9 to 36V DC; or 20 to 53V DC

Private Labeling Services**Customization Services****Sunlight Readable
Model Available**

Mechanical Drawings



These technical and mechanical resources are subject to change without notice.



AbraxSys
RUGGED LCD SOLUTIONS

(800) 883-9050

info@abraxsyscorp.com

www.abraxsyscorp.com

6161 Keller's Church Road, Units 6151B, 6161A, 6161B, 6171A & 6171B
Pipersville, Pennsylvania 18947 U.S.A.